

Poultry Microbiology



 **HARDY**
DIAGNOSTICS
A Culture of Service™



Online Ordering Available

042313TR

Poultry Microbiology

Contents

| | | | |
|----------------------------|----|---|----|
| General Lab Supplies | | HardyCHROM™, Chromogenic Culture Media | 50 |
| • Gloves | 1 | Stains & Reagents | 53 |
| • Protective Wear | 2 | Cryogenic Vials (CryoSavers™) | 55 |
| • Face Shields | 3 | Dehydrated Culture Media (CRITERION™) | 57 |
| • Autoclave Bags | 3 | Control Organisms | 61 |
| • Glassware | 4 | Environmental Monitoring (Contact Plates) | 63 |
| • Spreaders and Loops | 5 | Environmental Sampling Swabs | 65 |
| • Petri Plate | 7 | Environmental Pathogen Screen | 66 |
| • Slides | 8 | ATP-Hygiene Monitoring | 67 |
| • Pipettes | 9 | Rapid Non-ATP-Hygiene Checks | 69 |
| • Sanitation Check | 13 | Air Sampling | 70 |
| • Sanitizers & Soaps | 14 | Culture Media for Air Sampling | 71 |
| • Sample Collection | 16 | Environmental Sampling - Drag Gauze | 72 |
| • Equipment | 19 | Sampling Template | 72 |
| • Masticators | 23 | Environmental Sampling Sponges | 73 |
| • Gas Generators | 25 | EnviroBootie™ | 75 |
| Pathogen Detection | 29 | | |
| Dilution Vials (Dilu-Lok™) | 31 | | |
| Compact Dry (Plate Counts) | 33 | | |
| Prepared Culture Media | 38 | | |



General Lab Supplies

Gloves

Precision®

Nitrile, Violet-Blue, Powder Free, Maximum Dexterity

Ultra soft and super stretchy to reduce hand fatigue and maximize comfort.

- 100% latex-free, eliminating potential allergic reactions to latex protein.
- Textured surface provides strong grip for both wet and dry applications.
- Superior puncture, tear, and chemical resistance with excellent dexterity characteristics.



Precision® Nitrile Gloves

Finger and Palm 2.4mm, 100 gloves per box, 10 boxes/case:

| | |
|------------------|--------|
| Extra Small..... | PCS770 |
| Small..... | PCS772 |
| Medium..... | PCS775 |
| Large..... | PCS776 |
| Extra Large..... | PCS778 |



Protective Wear

Lab Coats

ComfortPRO™ Disposable Lab Coats

- These affordable, disposable lab coats are made of tri-laminated material.
- Fully breathable and splash resistant.
- Our lab coats feature snap front buttons, knit cuffs, and knit collars for added comfort.
- Three pockets are also featured, one on the breast and one at each hip.
- Your choice of color: white or blue. Available in five sizes.

Blue, 30/case

| | |
|---------------|-----------|
| Small..... | 36103BS |
| Medium..... | 36103BM |
| Large | 36103BL |
| XLarge | 36103BXL |
| XXLarge | 36103BXXL |

White, 30/case

| | |
|---------------|-----------|
| Small..... | 36103WS |
| Medium..... | 36103WM |
| Large | 36103WL |
| XLarge | 36103WXL |
| XXLarge | 36103WXXL |



Free samples of ComfortPRO™ Disposable Lab Coats are available for evaluation.



Face Shields

Splash Shield

| | |
|---|------|
| Full Face Shield, 24 per box | 4505 |
| Splash Shield Short Shield Eye protected, mouth exposed, 24 per box | 4511 |



Splash Shield (full-face),
Cat. no. 4505

Lab Aprons

Personal protective apron made of polyethylene,
2-1/4 mil. Apron, plastic, fluid proof, 43x59 inches,
20/case..... 8571

Lab Apron



Autoclave Bags

- Made of tough, thick polypropylene with double seamed bottom
- Solid red bag with black biohazard warnings in English and Spanish
- Rated to withstand heat up to 300 °F
- Heat indicator strip turns black when exposed to steam
- OSHA-approved labeling

25x35 inches, 2mil thick,
200/case..... AB5237

Autoclave Bag



General Lab Supplies

Glassware

Graduated Beakers, Borosilicate Glass

- Made from high-quality borosilicate glass for exceptional quality
- Easy-pour spout
- White, permanent graduations
- Large marking square
- Manufactured with uniform wall thickness, offering optimum balance between thermal shock resistance and mechanical strength
- Accuracy: $\pm 5\%$ of full capacity
- Meets ASTM E-960 Type I specifications for classification, design, capacity, dimensions, and markings

250ml, 12/pk.....20229250

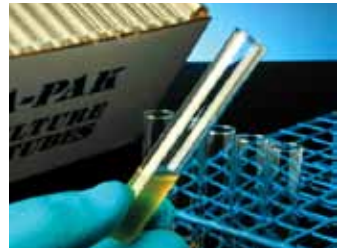


Beaker, Graduated, Cat. no. 20229250

Culture Tube, Borosilicate Glass

- Material: Type 1, Class A Borosilicate Glass
- Chemically inert
- Produced in an ISO 9001:2008 certified factory
- Made from superior quality borosilicate glass to reduce pH changes and contaminants that are potentially leached from tubes made from soda lime glass
- Features well-rounded bottoms and smooth fire-polished rims

10x75mm (3mL), 250/box, 4 boxes/case1503
12x75mm (5mL), 250/box, 4 boxes/case1505
16x100mm (10mL), 250/box, 4 boxes/case.....1510
13x100mm (7mL), 250/box, 4 boxes/case1512
16x125mm (12mL), 250/box, 4 boxes/case1515
16x150mm (15mL), 250/box, 4 boxes/case1517



Culture tube, borosilicate glass (3mL, 5mL, 7mL, 10mL, 12mL, 15mL)

Centrifuge Tube

Premium quality general purpose centrifuge tubes with molded graduations in polystyrene with write-on area.

15ml, polystyrene, sterile with screw cap, molded graduations, 25/bag, 500/case6280

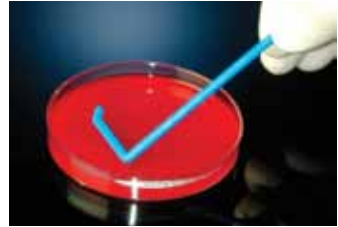


Centrifuge tube, polysterene, Cat. no. 6280

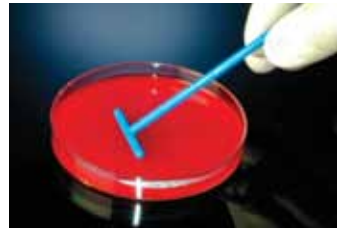
Spreaders (sterile)

Spreader, L and T Shaped, Disposable
 Made of durable, disposable polystyrene. Unlike glass spreaders, they are non-breakable and do not pose a safety hazard.

| | |
|---|-----------|
| L-Shaped Spreader, 1/pack, 500/case | 174CS01 |
| L-Shaped Spreader, 5/pack, 1000/case | 174CS05 |
| L-Shaped Spreader, 10/pack, 500/case | 174CS10 |
| L-Shaped Spreader, 10/Zip-Lock™ bag, 500/case | 174CS10ZL |
| T-Shaped Spreader, 1/pack, 500/case | COPTS10 |
| T-Shaped Spreader, 10/Zip-Lock™ bag, 500/case | COPTS10ZL |
| T-Shaped Spreader, 5/pk, 1000/case | COPTS5 |



L-Shaped Spreader



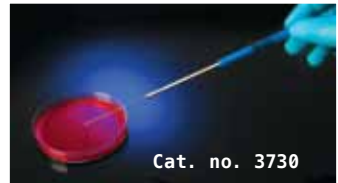
T-Shaped Spreader

Metal Loops

Loop, Nichrome, Calibrated

Calibrated inoculating loop, made from high-grade nickel-chromium alloys to ensure repeated, accurate usage. Guaranteed to deliver precisely 1µl or 10µl of specimen, with or without handle.

| | |
|--|------|
| 26 gauge twisted nichrome wire: | |
| 1µl, with aluminum handle, each | 3730 |
| 1µl, without handle, each | 3630 |
| 10µl, with aluminum handle, each | 3740 |
| 10µl, without handle, each | 3640 |



Cat. no. 3730

Nichrome loop with handle
 low cost, lightweight handle
 with attached loop for ease
 of streaking.

Needle, Nichrome

Straight needle used to inoculate various liquids, suspensions, deeps, and slants. Made from high-grade nickel-chromium alloy.

| | |
|---|------|
| Needle, with aluminum handle, insulated sleeve, 5/pack | 3060 |
| Needle, without handle, 3mm, each | 3326 |



Nichrome loop without handle

LoopCaddy™ System (Disposable Loops)

A convenient, acrylic loop holder for use with the Hardy Diagnostics resealable loop pouches. The loop pouch slides onto the loop holder, which holds it steady for easy one-handed dispensing. The loop handles remain covered on top to reduce airborne contaminants. The Loop Caddy™ eliminates the laborious task of opening and closing loop containers each time a loop is needed. Loops are available as Rigid or Flexible.



1 Slide resealable loop pouch into LoopCaddy™.



2 Peel open the resealable tab on top.



3 Secure the tab into clip.



4 Take out loop and reseal tab.

Inoculation Loops and Needles in Resealable Pouches

| | |
|---|------------|
| 1µl, loop, calibrated, 20cm, flexible, 40/pack, 1000/bx..... | 178CSR40 |
| 1µl, loop, calibrated, 20cm, rigid, 40/pack, 1000/bx..... | 8175CSR40H |
| 10µl, loop, calibrated, 20cm, flexible, 40/pack, 1000/bx..... | 179CSR40 |
| 10µl, loop, calibrated, 20cm, rigid, 40/pack, 1000/bx..... | 8177CSR40H |
| 20cm, needle, medium, 40/pack, 1000/bx..... | 176CSR40 |
| LoopCaddy™ acrylic holder for above pouches..... | K24H |

SpeedStreaks™ Loops and Needles in Ziploc® Bags

SpeedStreaks™ are Hardy Diagnostics' original line of disposable inoculating loops. The loops are available in several styles and are color coded for convenience. The 1µl and 10µl loops come each in two different styles, rigid-hard or flexible-soft, to fit a variety of streaking preferences. Certificate of calibration available.

| | |
|--|-------|
| 1µl, loop, calibrated, dark green, rigid, 25/pack, 1000/case..... | HS1R |
| 1µl, loop, calibrated, light green, flexible, 25/pack, 1000/case..... | HS1F |
| 10µl, loop, calibrated, dark blue, rigid, 25/pack, 1000/case..... | HS10R |
| 10µl, loop, calibrated, light blue, flexible, 25/pack, 1000/case..... | HS10F |
| Needle, violet, rigid, 25/pack, 1000/case..... | HSND |

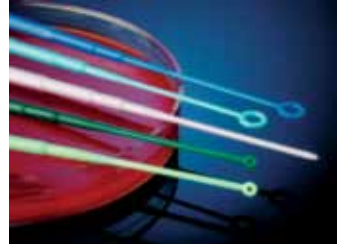


Disposable Loops

SpeedStreak™ Loops and Needles in Rigid Containers

For Microbiologists who prefer loops packaged in rigid rectangular plastic containers that will not roll off the bench! Certificate of calibration available.

| | |
|---|--------|
| 1µl, loop, calibrated, flexible, 50/tube, 1000/bx..... | HST1F |
| 1µl, loop, calibrated, rigid, 50/tube, 1000/bx | HST1R |
| 1µl, loop, calibrated, rigid, 150/tube, 900/bx | HLT1R |
| 1µl, loop, calibrated, flexible, 150/tube, 900/bx..... | HLT1F |
| 10µl, loop, calibrated, flexible, 150/tube, 900/bx..... | HLT10F |
| 10µl, loop, calibrated, rigid, 150/tube, 900/bx | HLT10R |
| 10µl, loop, calibrated, flexible, 50/tube, 1000/bx..... | HST10F |
| 10µl, loop, calibrated, rigid, 50/tube, 1000/bx | HST10R |
| 1.45mm, needle, medium, 50/tube, 1000/bx..... | HSTND |
| 1.15mm needle, 15cm length, mini-tip,1000/box..... | COPMIN |



Loop Incinerator

Bacti-Cinerator IV

Safely sterilizes loops and needles by infrared heat in ceramic tube. No open flame or hazardous gas. Prevents infectious spatter and/or cross contamination. Ideal for use in anaerobic chambers. Complete sterilization takes only 5 to 7 seconds at optimum sterilizing temperature of 1500° F. Base is weighted for stability and provides convenient storage for 6 needle holders.

| | |
|---|--------|
| Electric Bacti-Cinerator IV..... | 004002 |
| Ceramic Heat Element Replacement IV | 001373 |



Petri Plates

Petri Dish, with Smooth Bottom

- Optically clear polystyrene - for distortion-free viewing
 - Heavy Duty - reduces breakage during shipping
- Without stacking ring, 100x15mm, 500 per case.....3301

Petri Dish, with Stacking Ring

- Optically clear polystyrene - for distortion-free viewing
 - Heavy Duty - reduces breakage during shipping
 - Stacking rings - guards against slippage when moving stacked plates
- 100x15mm, 500/case.....3561



General Lab Supplies

Slides

Single frosted on one end of one side. White glass, beveled edges.

ProSlide™ Microscope Slides

Frosted, economy, 76mm x 25mm,
72/boxPF72E
Frosted, premium, 76mm x 25mm,
72/boxPF72P

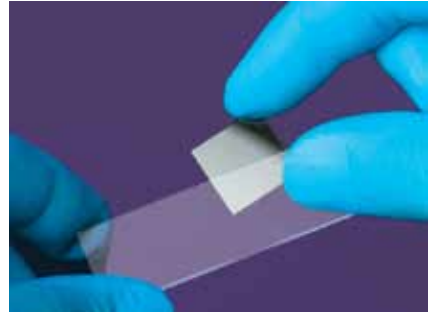


ProSlide™ Microscope Slides

Cover Glass Premium

High quality, borosilicate cover glass is non-corrosive and non-fogging. Cover glass is devoid of scratches, bubbles, and striations. The flatness provides a uniform distortion free surface. A desiccant is added to each box to ensure that moisture doesn't degrade the cover glass. Convenient plastic storage container allows for easy stacking on the shelf.

Cover Glass, premium, 18x18mm, 28gm/box.... 3305



Cover Glass Premium

Bibulous paper

High quality, highly absorbent papers manufactured for minimum linting and shedding.

Excellent for super-absorption, slide blotting,
12 books - 50 sheets/book 28511007

Lens Paper

Clean safety glasses and goggles, microscope lenses, and more with no scratching. Dust and lint-free lens tissues are ideal for use with liquid cleaners.

Dimensions: 102mm x 152mm. Use with lens cleaning solution (Cat. no. Z97).

12 packages of 50 sheets each52846001



Lens Paper

Microscope lens cleaner

A safe and effective microscope lens cleaning solution in a dropper bottle. Cleaner is gentle on optics and leaves no residue.

30ml dropper bottle Z97

Pipettes

5ml Capacity



| Technical Data | Sterility | Package Information | Units | Cat. no. |
|---|-------------|----------------------------------|-------|-----------|
| <ul style="list-style-type: none"> • Capacity: 5ml • Total length: 155mm • Drops/ml: 23 • Stem diameter: 7.8mm • Bulb draw: 2ml • Tip diameter: 2.6mm | Non-sterile | 500/dispenser box | 500 | 138050500 |
| | Non-sterile | 500/dispenser box, 10 bx/case | 5,000 | 138050 |

3ml Capacity, Graduated to 1ml, Small Bulb



| Technical Data | Sterility | Package Information | Units | Cat. no. |
|--|-------------|---|-------|-----------|
| <ul style="list-style-type: none"> • Capacity: 3ml • Total length: 140mm • Drops/ml: 25 • Stem diameter: 4.4mm • Bulb draw: 2.2ml • Tip diameter: 2.4mm • Graduated up to: 1ml • Graduation increments: 0.25ml | Sterile | Individually wrapped, 100/bag | 100 | 137135100 |
| | Sterile | Individually wrapped, 100/bag, 4 bags/case | 400 | 137135 |
| | Non-sterile | 500/dispenser box | 500 | 137035500 |
| | Non-sterile | 500/dispenser box, 10 bx/case | 5,000 | 137035 |



General Lab Supplies

Pipettor

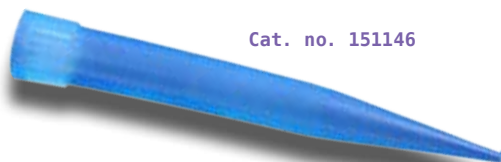
- 100-1,000µl Diamond PRO™ Pipettor, orange,
Each.....33111000
- Pipet, Adjustable, Diamond Line, autoclavable portions,
20-200µl, lavender,
Each.....3311200
- Pipet, Adjustable, Diamond Line, autoclavable portions,
1000-5000µl (1-5ml), green,
Each.....3311500



Universal Pipet tips

| | | | |
|---------------|--------|--------------------------------------|---------|
| 1 - 200µl | yellow | 200/rack, 5 racks/stack (1,000/rack) | 152143R |
| 100 - 1,000µl | blue | 1,000/pk | 151146 |

For MLA®, Oxford®, and Pipetman® pipettors.



Cat. no. 151146

Universal, with Filter

For use with but not limited to:

- Biohit Proline®
- Corning/Costar® 4964
- Eppendorf® 4810, Reference, Research, Response (4850)
- Gilson Pipetman® P-1000
- Hamilton 1708-40
- Labsystems Finnpipette® 4027, 4500
- Nichiryo Oxford Benchmate®
- Oxford Slim-line®
- Rainin® EP-250 & EP-1000
- Socorex Calibra®
- Vista Lab MLA®

- Filter, Natural, Sterile, 1-1000µl, 100 per rack, 10 racks/case.....153830
- Filter, Natural, Sterile, 1-200µl, 96/rack, 10 racks/case.....153820



Disposable Pipettes

Hardy Diagnostics offers plastic, disposable pipets featuring a one-piece construction designed to eliminate the risk of breakage and sample retention. Clear black graduation marks prevent ambiguity and guarantee precise liquid reading.

- Calibration is certified for accuracy
- Aerosol barrier filter plug
- Ergonomic design for use in tight spaces
- Negative graduations (not on the 25ml size)
- Meets ASTM E934

Sterile, Individually Wrapped

| | |
|---------------------------|------|
| 1ml Pipet, 500/case..... | 1700 |
| 2ml Pipet, 500/case..... | 1720 |
| 5ml Pipet, 250/case..... | 1740 |
| 10ml Pipet, 200/case..... | 1760 |
| 25ml Pipet, 100/case..... | 1780 |

Sterile, 25/pk

| | |
|----------------------------|------|
| 1ml Pipet, 1,000/case..... | 1715 |
| 2ml Pipet, 1,000/case..... | 1730 |
| 5ml Pipet, 375/case..... | 1750 |
| 10ml Pipet, 250/case..... | 1770 |

Non-Sterile, 25/pk

| | |
|----------------------------|------|
| 1ml Pipet, 1,000/case..... | 1715 |
| 2ml Pipet, 1,000/case..... | 1735 |
| 5ml Pipet, 375/case..... | 1755 |
| 10ml Pipet, 250/case..... | 1775 |



General Lab Supplies

Portable Pipet Controller

A rechargeable electronic pipetting aid designed for use with glass or plastic serological pipets in the 0.1 to 100ml volume range. It is lightweight and ergonomically designed for effortless pipetting even during extensive use.

- Low battery indicator
- Ergonomic design
- Powerful 3-speed engine
- Safety valve and replaceable membrane filter provide double protection against fluid and aerosol contamination
- Removable nose cone is autoclavable
- Up to eight hours of continuous use on a single charge

Each3380



Sanitation Check

Hydriion Quat Test Kit

Hydriion quaternary test paper provides a simple, reliable, and economical measure to the concentration of Quaternary Sanitizers. With color matches at 0-100-200-300-400ppm (parts per million), the test paper measures concentrations between 0-400ppm, detecting exhaustion of solutions that should be replaced as well as helping to avoid using excessive amounts of sanitizing agents.

100 tests/kit.....QT10



Hydriion Chlorine Test Kit

Hydriion chlorine test paper is the simple, reliable, and economical way to measure the concentration of free available chlorine in sanitizing solutions. This test paper measures concentrations between 10-200 ppm (parts per million), with color matches at 10, 50, 100, and 200ppm. The distinct color match at each full unit makes it easy for the user to identify the correct chlorine level.

200 tests/kit.....CM240



Chloride QuanTab® Test Strips

These test strips quickly and quantitatively determine chloride levels in water samples. After dipping in the sample, the strip changes color and can be compared against an included scale for an accurate reading.

40 test strips/bottle.....2744940



Sanitizers & Soaps

EZ Step Stainless Steel Gallon Dispensers

Stainless steel, wall mounted, wrist activated; accommodates one gallon ALPET™ E3 bottle. EachMD10006

Stainless steel foot activated, accommodates one gallon bottles. Each.....MD10012

AloeGuard® Antimicrobial Hand Soap

A specially formulated antimicrobial soap with soothing, moisturizing aloe vera to protect your skin's delicate balance. Chloroxylenol (PCMX) provides the high antimicrobial activity necessary for personal protection. Feels and smells great while leaving your hands feeling soft and clean.

1 gallon, each.....7740
 18oz pump bottle, each7760
 4oz bottle with flip top, each7725



Stainless Steel Gallon Dispenser, Cat. no. MD10006.



Ethanol Hand Sanitizer Spray (ALPET™ E3)

Boasts the equivalency of an E3 rating from the USDA, which allows the user to handle food directly after use. It has been proven effective in killing *E. coli*, *Salmonella*, *Staphylococcus*. It is also enriched with a natural emollient to soothe and soften the hands.

1 liter spray bottle, 6 per case..... SA10012

Hand Sanitation

AloeSafe™ Antiseptic Hand Sanitizer Gel

Ethyl alcohol gel with *Aloe vera*, lavender oil, and vitamin E

- Contains healing vitamin E and moisturizing *Aloe vera*
- Does not cause drying
- Unique formula that's effective without harsh ingredients
- Does not contain propylene glycol (antifreeze additive)
- Does not contain sticky glycerin
- Does not contain estrogenic parabens
- Kills 99.9% of bacteria

59ml bottle with flip top, each AS2HD
 118ml bottle with flip top, each AS4HD
 473ml pump bottle, each AS16HD



The Only Non-Toxic Hand Sanitizer!



Surface Sanitizer

Alpet D2 Surface Sanitizer

Alpet D2 is a rapid kill, no-rinse, and highly evaporative surface sanitizer/disinfectant spray approved for food contact surfaces. Ideal for general surfaces and water sensitive equipment, Alpet D2 is a combination of isopropyl alcohol and a quaternary ammonium compound.

1.1 Liter, each SS10003
 19 Liter tote, each SS10002



Approved for food contact surfaces.

Clorox® Broad Spectrum Quaternary Disinfectant Cleaner

Fast-Acting Cleaner Disinfectant

- 33% faster than a leading quat
- Only quaternary registered to kill representatives of all ESKAPE pathogens, which cause two-thirds of all HAIs
- Kills MRSA, HIV, TB, VRE, Hepatitis B and C, and more
- 90% kill claims
- Kills bacteria in 2 minutes
- Fragrance-free
- Cuts through grease with powerful cleaning agents
- Gentle on surfaces

.95 Liter/946ml, each 30649
 3.8 Liter, each 30651



Sample Collection

Sample Bags/Cup

Whirl-Pak®, Stand-up/Write-on

A special gusset creates a flat bottom when the sample is placed in the bag, allowing the bag to stand completely on its own. May be used to hold liquids or solids and has a convenient write-on strip.

532ml, 500/box B01365WA

Clear, large stand-up bag,
Clear, 710 ml, 15cm W x 23cm
L, 3.0 mil thick,

500/bx.....B01401WA

4.08 liter, 37.5cm x 37.5cm,
100/bx.....B01542WA

Whirl-Pak®, Write-on Bags (Non-Stand-up)

White write-on strip to make sample identification easier and more convenient. Easily write with ballpoint pen, pencil, or felt tip marker. The paper-like finish virtually eliminates ink smearing, and provides a surface that will accept a variety of writing instruments.

30ml, 500/box B01067WA

59ml, 500/box B01064WA

118ml, 500/box B01062WA

532ml, 500/box B01065WA

710ml, 500/box..... B01297WA

1.6L, 500/box..... B01195WA

Rinse Bags (Poultry)

37.5cm x 50cm,

250/box.....B01319WA

Whirl-Pak®, Thio-Bag (Water Sampling)

Specially designed for sampling chlorinated water, economical, and convenient to use. This single service, sterilized, lightweight, unbreakable container is always ready for immediate use. Used by many states and EPA approved, this strong transparent bag holds a non-toxic, non-nutritive tablet containing 10mg of active sodium thiosulfate to neutralize chlorine at the time of collection. 125ml, 500/box..... B01364WA
300ml, 100/box B01254WA

Sample - ClikSeal™

- Patented lid is designed to securely lock in sample.
 - Audible “CLICK” when cap is screwed into secure position indicates seal has been made.
 - Lid features a “nesting” design so that cups can be easily stacked.
 - Constructed of tough polypropylene with thick walls.
 - Paper label is attached for easy sample identification.
 - Graduation marks on side allow for volume measurement.
 - Sterile cup includes tamper evident seal on lid.
- Sterile, 90ml,
400/case..... PC4090400S



ClikSeal™ Specimen Cup

Sample Cups

Sterile, Individually Wrapped Specimen Container

With green 1/4-turn screwcap.

- Tri-lingual patient ID label
- Graduated to 100ml
- Polypropylene (PP) construction
- Dimensions: Diameter: 57mm, Height: 73mm

100/case.....5913

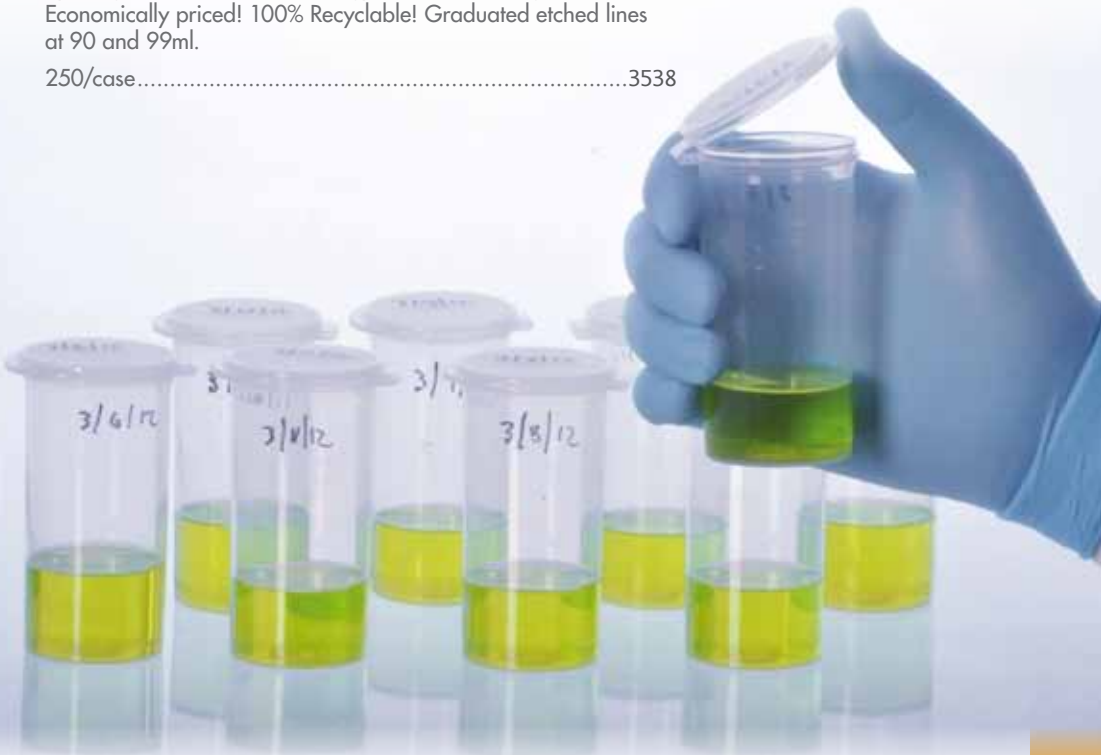


Specimen Container, Cat. no. 5913

Flip-Lok™ Vials Sterile (Empty)

Suited for a wide variety of applications. Great for sample collection and storage. Flip-Lid allows for easy one-handed opening. Leak resistant technology forms a water tight seal. Economically priced! 100% Recyclable! Graduated etched lines at 90 and 99ml.

250/case.....3538



Sample Collection

Dippers

Polypropylene Dipper with removable handle

Dipper consists of a blue polypropylene container with a removable handle. It is shock resistant and is assured Sterile 10^{-3} . Each dipper is individually packaged in a tamper-evident single zip bag.

| | |
|----------------------------------|---------|
| 40ml, screw cap, 250/case | TAT3001 |
| 90ml, hinged cap, 150/case..... | TAF1101 |
| 125ml, screw cap, 100/case..... | TAT5201 |
| 180ml, screw cap, 100/case | TAT5302 |



Tongue Blades/Sampling Sticks

Smooth, splinter-free tongue blades made from Northern White Birch.

Individually wrapped, sterile, 100/box..... 25705



Cotton Swab

One standard size, sterile, cotton-tipped applicator with wooden shaft. Popular in both medical and industrial laboratories used everywhere from the examination room to the cleanroom. 152mm overall swab length, wooden shaft, sterile cotton tip, individually wrapped.

1 per envelope, 100 envelopes/box.....HD258061WC



Scoops

Sampler Scoops, Disposable

Designed to gather small amounts of sample material, these sterile sampling spoons come in four sizes. The long handle reaches easily into confined areas and minimizes the potential of personal contact with sampled material.

Sterile, disposable, individually wrapped:

| | |
|---------------------------|----------|
| ¼ Teaspoon, 200/pk..... | 56925109 |
| ½ Teaspoon, 200/pk..... | 56925131 |
| 1 Teaspoon, 200/pk..... | 56925164 |
| 1 Tablespoon, 200/pk..... | 56925197 |



Equipment

Incubators

Incubators Analog

Made of 22 gauge steel with clear see-thru door or solid door for convenience. Exterior is powder coated for both scratch and stain resistance. All analog incubators come with a thermometer and have at least one adjustable shelf.

- Chamber Volume: .034 cubic meter
- Dimensions: 3.894 meters (W) x 12.6 meters (H) x .48 meter (D)
- Weight: 16 kilograms
- Electrical: 115 volt/60 Hz
- Temperature Range: Ambient +10°C to 90°C
- Solid door, 2 shelves, 5 hour timer

Each139200

- Chamber Volume: .14 cubic meter
- Dimensions: .49 meter (W) x .91 meter (H) x .58 meter (D)
- Weight: 34 kilograms
- Electrical: 115 volt/60 Hz
- Temperature Range: Ambient +10°C to 90°C
- Solid door, 2 shelves, 5 hour timer

Each139400

Hot Plate, Stirrer, Magnetic Digital

Low profile and compact hot plate has ability to heat and stir simultaneously or perform each function separately.

- Can carry out precise stable stirring of liquid, even at high speeds
- Comes with temperature probe
- LED display able to manually switch between set temperature and actual temperature
- Temperature Range: Room temperature - 300°C
- Stirring speed up to 2,000 RPM
- 15.24cm diameter working surface
- Overall size 27.9cm x 16cm x 10.16cm

Each881



Cat. no. 139200



Cat. no. 139400



Cat. no. 881

Equipment

Hot Plate

Hot Plate, Stirrer, Magnetic

Hot plate offers the benefit of having two separate machines in one unit. Small, space-efficient design is ideal for crowded benchtops and underneath bio-hoods.

- Advanced microprocessor controls with convenient turn knobs for quick, precise adjustment and maintenance of speed and temperature
 - Safety indicator LED on front panel for indicating heat and/or activated stirring functions
 - Speed Range: 60-1500 RPM
 - Temperature Range: 65°C to 380°C
 - Platform dimensions: (19cm x 19cm)
 - Footprint dimensions: 25mm (W) x 114mm (H) x 229mm (D)
- Teflon-coated magnetic stir bar, 25mm, Each..... 508B
Each 508



Cat. no. 508

Vortex Mixer

This product provides a smooth instant vortexing of even the largest sample sizes, including 50ml tubes. The unique counter balance system creates maximum vortexing action, while minimizing noise and excessive vibration. This results in a quieter, more efficient, and longer lasting operation. The vortex mixer offers touch or continuous operation as well as variable speed control from 200 to 3200 rpm. Other features include: Suction feet, cold room and incubator compatibility, as well as spill-proof electronic controls, with universal cup head, analog, 115V, each..... 500



Cat. no. 500

Water Bath

General Purpose, Digital

The "Hot Tub" general purpose water bath offers a variety of sizes and is ideal for general lab applications.

- Space saving design allows for the most efficient use of bench space
 - Digital controller for easy temperature selection and rapid heat-up
 - Can also be used as a boiling bath by setting the temperature to boiling mode (with lid)
 - Temperature range: ambient +5°C to 100°C or boiling mode
 - Overall dimensions: 337mm (W) x 251mm (H) x 210mm (D)
 - Tank dimensions: 299mm (W) x 140mm (H) x 152mm(D)
 - Weight: 6.34 kilograms
- Each 290100



Cat. no. 290100

Thermometer

Infrared Thermometer Gun with Laser Beam Sighting

Traceable, small, lightweight unit takes temperature readings of any surface in less than one second. Features Celsius/Fahrenheit button. Laser sighting beam permits direct aim at target surface. Use for food, safety inspection, and any liquid or solid. Temperature Range: -60 to 500°C (-76 to 932°F).

- Backlighting
- Data hold (freezes display reading)
- Laser
- Low-battery indicator

Each.....12777846



UV Lamp

UV Lamp, Long Wave, Hand Held

This ultraviolet lamp has a powerful 6 watt bulb for easier, more reliable detection than weaker models. Can be used for ALA, MUG, and fluorescent pigment detection in microbiology.

- Wavelength: 365nm
- Intensity: 1,350µW/cm² at 7.6cm
- 6 Watt, 120V

Each.....UVL56



Cat. no. UVL56

Thermometers

Exact-Temp™ Thermometers

Thermometer probe stays inside the refrigerator or incubator, while the digital display stays outside. No need to open the door! Temperature probe remains in plastic bottle with insulating liquid. Thermometer is traceable to National Institute of Standards and Technology (NIST) with certificate. Min/Max alarm settings with nine foot cord. Choose between Celsius and Fahrenheit. Accurate up to ±0.6°C for precise measurements, Resolution: 0.1°C. Display size is 1.75 x .75 inches for easy viewing, powered by one AAA battery (included).



| Type | Certified Temperature | Temperature Range | Cat. no. |
|--------------|-----------------------|--------------------------------|----------|
| Freezer | -20.0°C | -50°C to 70°C (-58°F to 158°F) | F80301 |
| Refrigerator | 4.0°C | -50°C to 70°C (-58°F to 158°F) | R80301 |
| Incubator | 37.0°C | -50°C to 70°C (-58°F to 158°F) | I80301 |

Equipment

Blenders

Blender, Lab, Single Speed, Stainless Container

For rapid pulping or mixing. Widely used for emulsifying and blending cosmetics, foods, vitamins, paints, paper, biologicals, and oils.

- Removable containers of heat-resistant stainless steel
- 1L working capacity
- Blades revolve at 20,000 RPM
- 0.4 hp motor
- Enamel-coated metal base
- Underwriters Laboratories Inc. (UL) listed

Each 58977023



Cat. no. 58977023

Colony Counting

Colony Counter, Dark Field

- Exclusive dark field design provides even, glare-free illumination
- Highly polished, annular reflector spreads light from 40-watt bulb uniformly over the entire culture plate
- Contrasted against dark field background
- Brightly lit colonies to quickly distinguish other structures in the agar
- Dimensions: 26.7cm (W) x 27.9cm (H) x 25.4cm (D)
- 120 volts

Each 23610157



Cat. no. 23610157

Colony Counter, Hand Tally

Comfortable thumb push and easy to read numerals are ideal for counting cells or any other high number tally up to 9,999.

Each 975601



Cat. no. 975601

Burners

Alcohol Burner - Classic

- Sturdy, heavy-walled glass design has a large capacity of 150ml
- Fitted with a nickel-plated brass cap used to extinguish the flame and to prevent the evaporation of alcohol
- Either methyl or ethyl alcohol can be used with the lamp

Each 3040



Cat. no. 3040

Masticator®/Homogenizer

Masticator®, Homogenizer Blender

An easy-to-use, reliable machine designed to handle almost any sample. Offers clean, fast, contamination-free sample homogenizing. The Masticator® features a stainless steel compartment, stainless steel paddles, a hinged door that removes easily for cleaning, and maintenance-free, self-lubricating parts. Homogenizes samples from 80-400ml.

Each B01420WA



Blender Bags

Whirl-Pak® Blender Bag

Plain sterile bag for use in all types of homogenizing blenders. Made from sturdy blended polyethylene.

19cm x 30cm, 3mils (.076mm) thick,
1,000/box..... B01421WA

37.5cm x 50cm, 4mils (.102mm) thick,
250/box..... B01474WA



Whirl-Pak® Blender Bag

Blender Filter Bags - Sterile

Specially designed for use with homogenizer blenders these bags are sterile and are made from extra-heavy polyethylene with a strong perimeter seal. Features a filter layer to separate the liquid and solids, allowing for easy pipetting of the sample.

152x229mm, 4mils
250/box..... B01348WP

191mmx305mm, 4mils
250/box..... B01318WP

190x300mm, 400ml fill, 25/pk,
500/case..... 122025IS

180x95mm, 100ml fill, 25/pk,
500/case..... 121025IS

Poultry Rinse Bags

Specially designed for poultry sampling, sealed at the top to maintain sterility, and has a perforation for easy opening. This size will hold small turkeys, chickens, and other similar sized birds. After placing the bird in the bag with the proper amount of diluent, twist the bag, and shut and fold the bag around the bird. With two hands, rotate the bird approximately 30 times. When this is completed, remove some of the diluent and test it for *E. coli*.

Rinse Bags, Poultry, 37.5cmx50cm,
250/box B01319WA



Cat. no. B01319WA

Scales and Weighing Dishes

Precision, Electronic Scale

Excellent for weighing out food samples and for general laboratory use. Digital read-out from 0 to 610 grams. The high-precision portable balance offers a range of built-in applications with Swiss quality in a compact design.

Each ML601E



Measures to $\frac{1}{10^{\text{th}}}$ of a gram.

Weighing Dishes

Disposable plastic weighing dishes have flat bottoms, sloping sides, and round corners. Polystyrene composition is resistant to dilute acids, alcohols, and bases and will withstand temperatures to 60 °C. These weighing dishes are ideal for handling both liquids and solids. Dishes are available in different of sizes to suit your specific needs.

Weighing Dish, Polystyrene
 Small, 41mm x 41mm x .31 mm
 500 per case3620
 Medium, 89mm x 89mm x 25mm
 500 per case3621

Large, 140mm x 140mm x 22mm
 500 per case3622
 Disposable, Aluminum
 102mm, 50/pk..... 1217730



Gas Generators

CampyGen™

CampyGen™ (Jar System for Campy)

CampyGen™ is a simple-to-use system for rapidly generating a microaerophilic environment necessary to cultivate *Campylobacter* spp. within a sealed jar. The CampyGen™ jar system consists of a CampyGen™ sachet and a gas jar.

- No catalyst needed and no water required for activation
- No potentially explosive hydrogen gas produced
- No dangerous build-up of pressure, as the sachet acts as an oxygen scavenger
- Sachet activated upon opening
- Final atmosphere with oxygen, which is ideal for the growth of *Campylobacter* and other microaerophilic organisms
- Microaerophilic conditions reached in 30 minutes

CampyGen™ Jar System

CampyGen™ for 2.5 liter Sachets, 10 sachets/bx.....CN025A
Almore Gas Jar, 2.5 liter, each.....16000



Gas Generators

CampyGen™

CampyGen™ Compact (Bag System)

CampyGen™ Compact is a simple-to-use system for rapidly generating a microaerophilic environment necessary to cultivate *Campylobacter* spp. The CampyGen™ Compact system consists of a CampyGen™ sachet, an oxygen impermeable pouch, and a sealing clip. Each pouch is large enough to hold four 15x100mm petri plates.

- No catalyst needed and no water required for activation
- No potentially explosive hydrogen gas produced
- No dangerous build-up of pressure, as the sachet acts as an oxygen scavenger
- Sachet activated upon opening
- Final atmosphere with 6% oxygen, which is ideal for the growth of *Campylobacter* and other microaerophilic organisms
- Microaerophilic conditions reached in 30 minutes

CampyGen™ Compact System

| | |
|---------------------------------------|--------|
| CampyGen™ Compact 20 sachets/box..... | CN020C |
| Plastic Pouches, 20 pouches/box..... | AG020C |
| Sealing Clips, 5/box (reusable)..... | AN005C |

CampyGen™ Compact Sachet



CampyGen™ Compact Sachet



Sealing Clip

O₂ Impermeable Pouch

AnaeroGen™

AnaeroGen™ Compact (Bag System)

AnaeroGen™ Compact is a simple-to-use system for rapidly generating an anaerobic environment necessary to cultivate anaerobic microorganisms. The AnaeroGen™ Compact system consists of an AnaeroGen™ sachet, oxygen impermeable pouch, and sealing clip. Each pouch is large enough to hold four 15x100mm petri plates.

- No catalyst needed and no water required for activation
- No potentially explosive hydrogen gas produced
- No dangerous build-up of pressure, as sachet acts as an oxygen scavenger
- Sachet activated upon opening
- Final atmosphere with less than 1% oxygen, which is ideal for the growth of anaerobes
- Anaerobic conditions reached in 30 minutes

AnaeroGen™ Compact System

| | |
|--|--------|
| AnaeroGen™ Compact Sachet, 10/box..... | AN010C |
| Sealing Clips, 5/box (reusable)..... | AN005C |
| Anaerobic Indicator,00 strips/box..... | BR55 |



Gas Generators

CampyGen™

AnaeroGen™ Jar System for Anaerobes

AnaeroGen™ is a simple-to-use system for rapidly generating an anaerobic environment necessary to cultivate anaerobic microorganisms within a sealed jar. The AnaeroGen™ system consists of an AnaeroGen™ sachet and an oxygen indicator within a gas jar.

- No catalyst needed and no water required for activation
- No potentially explosive hydrogen gas produced
- No dangerous build-up of pressure, as sachet acts as an oxygen scavenger
- Sachet activated upon opening
- Final atmosphere with less than 1% oxygen, which is ideal for the growth of anaerobes
- Anaerobic conditions reached in 30 minutes

AnaeroGen™ Jar System

| | |
|---|--------|
| AnaeroGen™ for 2.5 liter Sachets, 10 sachets/box..... | AN25US |
| AnaeroGen™ for 3.5 liter Jar, 10 sachets/box..... | AN35US |
| Anaerobic Indicator, 100 strips/box..... | BR55 |
| Almore Gas Jar, 2.5 liter, each..... | 16000 |



Pathogen Detection

Campylobacter Latex

A rapid latex slide agglutination test for enteropathogenic *Campylobacter* grown on selective media. Is highly specific so that a presumptive identification can be reliably formed on the basis of the Microgen® test alone. Results in two minutes.
50 tests per kit.....F46

Coagulase Plasma

Lyophilized rabbit plasma, for identification of *Staphylococcus aureus* by using coagulase test.
6x3ml..... Z003
6x20ml.....Z020

EcoliPRO™ O157 Latex Kit

For the identification of *E. coli* O157 from a colony of bacteria. So sensitive that it requires only one colony. Uses proprietary antibodies that eliminate the possibility of cross-reactions with *Escherichia hermannii* and other sorbitol-negative *Escherichia* species. Contains both positive and negative controls. Includes reaction cards and mixing sticks. Rapid results in just two minutes.
50 tests.....PL070HD



EnteroPluri-Test

EnteroPluri-Test is a 12-sector system containing special culture media that permits identification of the *Enterobacteriaceae* and other Gram negative, oxidase negative bacteria. The system allows the simultaneous inoculation of all media present in the sectors and the execution of 15 biochemical reactions. Microorganism is identified evaluating the color change of the different culture media after 18-24 hours of incubation at 36 ± 1 °C and by a code number obtained from biochemical reaction interpretation.
EnteroPluri, 25/box215336

Listeria Latex

Rapid slide latex test for the identification of motile *Listeria* spp. from solid selective media.
50 tests..... F48



Microgen® Listeria Identification Panel

A complete micro-well format identification panel for identifying all *Listeria* spp. No additional materials required. Substrates included conform to all international standards. Enhanced built-in hemolysis test; no blood plate required. Identifies *Listeria monocytogenes*.
20 tests.....MID67
Microgen® ID Software... MID60

Microgen® Bacillus-ID, Identification Panel

For the identification of mesophilic *Bacillus* species isolated from food materials and the environment. Helps in the identification of *Bacillus* and related species, particularly those involved in food poisoning and food spoilage. Substrates used are based on conventional methods and fully validated in scientific literature. Simple and easy-to-use 24 microwell format reaction system, results in 48 hours. Results interpreted using new Microgen ID system software (registered users are entitled to free database updates).
20 tests..... MID66



Salmonella Elisa Test Kit

Accurate results in 48 Hours!
Easy-to-use simple pipetting steps. Detects *Salmonella* spp. in food and feed at levels as low as 1 cfu/25 gram sample. AOAC approved, manual or automatic read-out.
12 strips, 8 wells/row,
96 tests..... CHB0081



StaphTex™ Blue (for *Staph aureus*)

Produces clear and reliable results when testing for *Staphylococcus aureus*. The plasma-coated blue latex beads create the easiest read-out ever! Positives rapidly agglutinate the blue beads on a white background, while negatives remain consistently smooth. The StaphTex™ Blue kit tests for both the Clumping Factor and Protein A found in *Staphylococcus aureus*. Liquid controls are included.

50 tests ST50
200 tests ST200

Salmonella Latex

A rapid, latex slide agglutination test for the presumptive identification of *Salmonella* spp. in selective and/or enrichment cultures or isolates taken directly from selective agars.

50 tests M42

Salmonella, Reveal™ REVIVE Medium

Salmonella test system provides for the rapid recovery of *Salmonella* in food and animal feed, allowing detection and presumptive identification of the test organism within 21 hours.

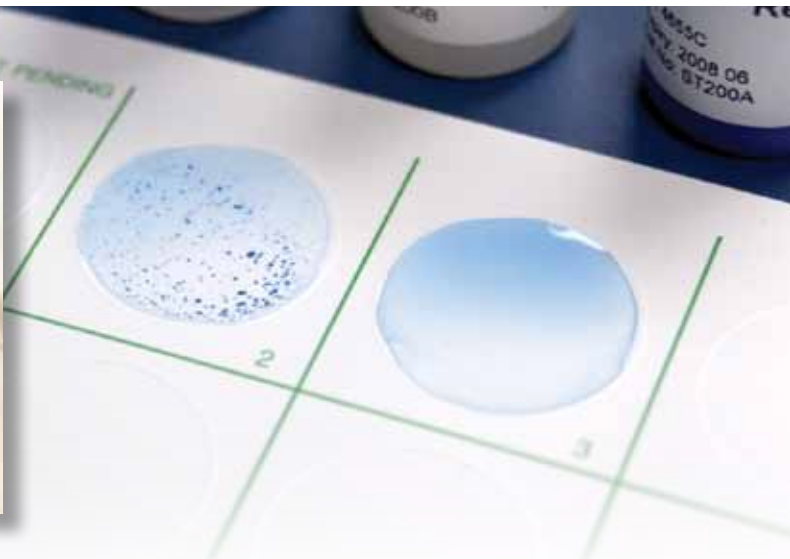
Product Specifications:

- Sensitivity: 1–5 CFU/25 g
- Testing time: 15 min
- Storage: 2–30°C
- Approvals: AOAC-RI #960801

20 TESTS/KIT..... 9708B



StaphTex™ Blue

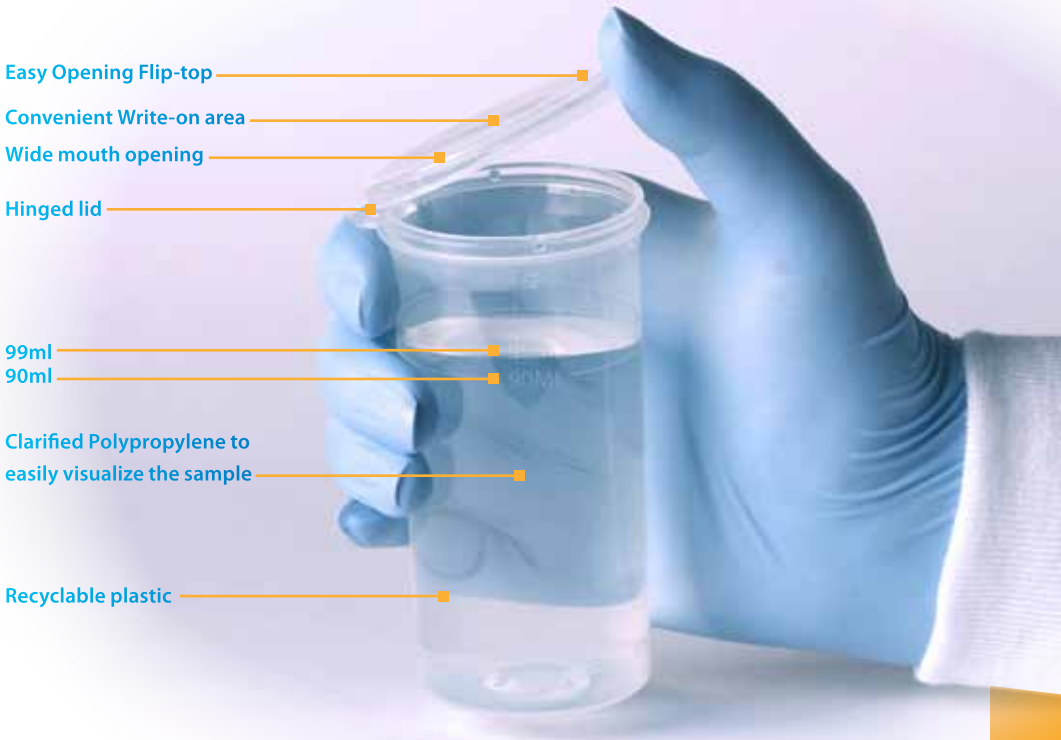


Dilution Vials

Sample Preparation

The Dilu-Lok™ eliminates the time and money spent on preparing your own dilution vials! Our pre-filled dilution vial is designed especially for the food, dairy, and water industries. Vials are filled to 90ml or 99ml with a variety of buffering solutions. Each lot is meticulously tested for pH, sterility, and fill volume. Designed and packaged to eliminate leaking.

- Simple - Easy-to-remove, perforated, shrink seal to ensure product integrity
- Large Opening - A wide 45mm opening to accommodate most sample sizes
- Certified - Each case delivered with a certificate of quality
- One-Handed - Hinged lid for easy opening
- Leak-Proof - New improved seal



Easy Opening Flip-top

Convenient Write-on area

Wide mouth opening

Hinged lid

99ml

90ml

Clarified Polypropylene to easily visualize the sample

Recyclable plastic

| | |
|--|------|
| Butterfield's Phosphate Buffer, 25ml, 50/pk | D125 |
| Butterfield's Phosphate Buffer, 90ml fill, 50/pk | D590 |
| Butterfield's Phosphate Buffer, 99ml fill, 50/pk | D599 |
| Peptone Water 0.1%, 90ml, irradiated, 50/pk | D290 |
| Peptone Water 0.1%, 99ml, irradiated, 50/pk | D299 |
| Phosphate Buffer with Magnesium Chloride, 90ml fill, 50/pk | D690 |
| Phosphate Buffer with Magnesium Chloride, 99ml fill, 50/pk | D699 |
| Potassium Phosphate Buffer, 99ml fill, 50/pk | D072 |
| TAT (Tryptone Azolectin Tween®) Broth, 90ml, irradiated, 50/pk | D077 |
| Buffered Peptone Water, 90ml fill, irradiated, 50/pk | D080 |
| Buffered Peptone Water, 99ml fill, irradiated, 50/pk | D089 |
| Buffered Peptone Water with 1% Tween® 20, 90ml fill, irradiated, 50/pk | D085 |
| Deionized Water, 50ml fill, 50/pk | D050 |
| Deionized Sterile Water, 90ml fill, 50/pk | D090 |
| Deionized Sterile Water, 99ml fill, 50/pk | D099 |





Compact Dry™ is a ready-to-use system reducing the time needed to perform microbial testing on food, beverage, meat, cosmetics, and raw materials. Place 1ml of sample onto the plate and incubate. Colonies grow and develop specific colors from chromogenic substrates. This provides for easy organism differentiation and counting.

Significant advantages over the competition.

Self-Diffusing Media

Colonies easy to pick and subculture

Write-on Area

Easy to Pick Up

Room Temp Storage and Long Shelf Life

Stackable

Removable Lid



Compact Dry™ TC (Total Count)

Compact Dry™ TC is a medium for total viable bacterial count. Growing colonies appear red due to redox indicator tetrazolium salt. Compact Dry™ TC is AOAC, MicroVal and NordVal approved.

100/pk..... TPC100



Compact Dry™ EC (*E. coli* and Coliforms)

Compact Dry™ EC contains two kinds of chromogenic enzyme substrates: Magenta-Gal and X-Gluc. *E. coli* forms blue colonies, Coliforms turn red. The total coliform group count is the sum of both the red and blue colonies.

100/pk..... EC100



Compact Dry™ ETB
(Enterobacteriaceae)

For the isolation and quantification of *Enterobacteriaceae* in foods, cosmetics or raw materials. *Enterobacteriaceae* will appear magenta in color, and are easily counted. *Enterobacteriaceae* are gram-negative, rod-shaped bacteria and are a normal part of the gut flora which is found in the intestinal tract of animals. Genera of *Enterobacteriaceae* consists of: *Citrobacter*, *Enterobacter*, *Escherichia*, *Klebsiella*, *Morganella*, *Proteus*, *Salmonella*, *Serratia*, *Shigella*, *Yersinia* and more.
100/pk.....ETB100



Compact Dry™ YM
(Yeast and Mold)

With Compact Dry™ YM, yeasts and mold can be differentiated by color. The medium contains the chromogenic enzyme substrate X-Phos which turns blue with many yeasts. Molds form fluffy colonies with a characteristic color.
100/pk.....YM100



Compact Dry™ XSA
(Staphylococcus aureus)

For the selective growth and differentiation of *Staphylococcus aureus* by egg yolk reactions. *Staphylococcus aureus* generates blue pigments which result in blue/blue green colonies.
100/pk.....XSA100



Compact Dry™ LS (Listeria)

For the selective growth, presumptive identification, and enumeration of *Listeria* spp.
100/pk.....LS100



Compact Dry™ CF (Coliforms)

For the detection of coliforms. Coliforms grow with blue/blue green colonies as the recipe contains the chromogenic enzyme substrate X-GAL. The growth of bacteria other than coliforms is mainly inhibited but in case of growth they form colorless colonies.
100/pk.....CF100

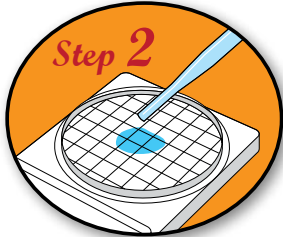


Compact Dry™ SL (Salmonella)

For the presumptive identification and enumeration of *Salmonella* spp.
100/pk.....SL100



Remove protective cap from Compact Dry™ plate.



Drop 1ml of specimen (dilute if necessary) in the middle of dry sheet.



Specimen diffuses automatically into the plate, transforming the dry medium to gel.



Attach the cap, and incubate for prescribed time. Count the number of colonies on a light box (Cat. no. 378642000).

Features and Benefits:

- Room temperature storage
- 18 month shelf life from date of manufacture
- Self diffusing media
- Stackable
- Write-on area
- Easy to handle and pick up
- Simple to pick colonies for subculturing
- Easy read-out of results



- Sample diffuses automatically and evenly. *No need for spreader!*

- Easy-to-handle. Rigid plastic frame with easy opening lid



- Stackable and space saving





• Simple colony picking

• Convenient write-on area



Call 800-266-2222 x5604, scan the QR Code, or visit HardyDiagnostics.com/CompactDry.html for a Free Evaluation Sample



IS MANUFACTURED FOR HARDY DIAGNOSTICS BY



NISSUI PHARMACEUTICAL CO., LTD

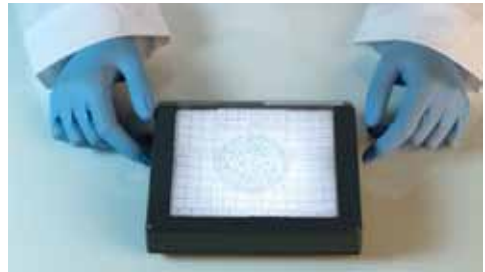
HARDY DIAGNOSTICS IS YOUR AUTHORIZED NORTH AMERICAN DISTRIBUTOR.

| AOAC Approved* | MicroVal Approved* | NordVal Approved* |
|----------------------|--------------------|------------------------|
| TC, EC, CF, YM, X-SA | TC, EC, CF, X-SA | TC, EC, CF, X-SA, X-BC |

*Call for more specific details



| Compact Dry™ Products | Incubation Temp | Incubation Time |
|-----------------------|-----------------|-----------------|
| CF | 35 °C | 18-24 hr |
| EC | 35 °C | 20-24 hr |
| XSA | 35 °C | 24 hr |
| TC | 35 °C | 44-48 hr |
| YM | 25 °C | 3-7 days |



• **Inoculation Temperature and Time**

• **Rapid results that are clearly readable**



• **Four plates per mylar sleeve**



• **Slides can simply be removed from one another**

• **Four slides can be left connected together for one convenient serial dilution set if desired.**

Prepared Culture Media



AnaeroGRO™ Egg Yolk Agar, Modified

This product is an enriched, non-selective, and differential medium recommended for use in the detection of lecithinase and lipase production and proteolytic activity of certain obligate anaerobes and in the presumptive identification of various *Clostridium*.
15x100mm plate,
1/pk..... AG401

AnaeroGRO™ PYG

(Peptone Yeast Extract Glucose Broth)

This product is an enriched, non-selective medium recommended for the cultivation and biochemical identification of obligately anaerobic microorganisms. This medium is also suitable for the growth of anaerobic bacteria to be identified by gas liquid

chromatography (GLC) analysis as outlined by the CDC.
16x125mm tube with needle-
port hungate screw-cap,
9ml, 20 tubes/box.....AG24H

Bacillus Cereus Selective Agar

A selective medium for the detection of *Bacillus cereus*.
15x100mm plate,
10/pk..... G156

Baird Parker Agar

For selective isolation and enumeration of coagulase-positive staphylococci (*Staphylococcus aureus*).
15x100mm plate,
10/pk..... G96

Beta Toxin,

Used to determine the CAMP reaction which aids in the presumptive identification of *Streptococcus agalactiae* from bovine samples.
60ml PETG bottle, 25ml fill,
each Z306
100ml fill, 125ml polycarbonate
bottle, each..... Z305

BEA

(Bile Esculin Agar)

For the detection of group D streptococci, including enterococci.
15x100mm plate, 10/pk..... G12

BEA with Azide and Vancomycin

(Bile Esculin Agar)

For VRE, 15x100mm plate,
10/pk.....G103

Blood Agar, 5%

Tryptic Soy Agar with 5% Sheep Blood
For the cultivation of microorganisms. Contains 5% sheep blood from a veterinary supervised, controlled herd of donor animals. Blood is guaranteed to be from healthy antibiotic-free animals.
15x100mm plate, 19ml fill,
10/pk..... A600

Blood Agar, with 5% Sheep Blood and Ampicillin

Tryptic Soy Agar with 5% Sheep Blood
For the cultivation and selective isolation of *Aeromonas* spp.
15x100mm plate, 10/pk..... A12

Blood Agar/ MacConkey Biplate

Tryptic Soy Agar with 5% Sheep Blood/ MacConkey
Ideal for urine cultures.
15x100mm biplate, 10/pk.....J32
15x100mm biplate,
100/bx..... J32BX

Blood Agar Plate, 5% Sheep Blood in TSA Base

(Tryptic Soy Agar Base)

For the non-selective cultivation of microorganisms. General growth media for bacteria, yeast, and fungi.
15x100mm plate,
10/pk..... A10
15x100mm plate,
100/bx.....A10BX

Visit our website at www.HardyDiagnostics.com for a complete listing of over 3,500 prepared media products!

BHI Broth

(Brain Heart Infusion)

For the cultivation of microorganisms.

Polycarbonate Tube

Optically clear, shatter resistant, 13x100mm tube, 0.5ml,

Min. order: 5 packs,

20/pk..... R10

16x100mm tube, 1ml fill,

20/pk..... K110

13x100mm tube, 2ml fill,

20/pk..... R15

16x100mm tube, 5ml fill,

20/pk..... K27

Glass Tube

13x100mm tube, 5ml,

20/pk..... R20

16x125mm tube, 10ml fill,

20/pk..... K25

BHI Broth with Hemin and Vitamin K

(Brain Heart Infusion)

16x125mm, Flat Bottom Tube,

15mm Opening, Glass, Non-

Sterile, with Cap, 10ml fill,

20/pk..... K75

BHI Broth with 5% Fildes

(Brain Heart Infusion)

16x125mm, Flat Bottom Tube,

15mm Opening, Glass, Non-

Sterile, with Cap, 10ml fill,

20/pk..... K08

BHI Broth with Ciprofloxacin

(Brain Heart Infusion)

10µg/ml, 16x100mm tube,

5ml, 20/pk..... K258

BHI Agar

(Brain Heart Infusion)

Plate

15x100mm plate, 26ml deep

fill, 10/pk..... W15



Brilliant Green Agar, 15x100mm plate, Cat. no. G75

BHI with Blood,
15x100mm plate, 10/pk..... A20

Flask

BHI Agar, plastic HardyFlask™,

20/pk..... X10

Tube/Slant

BHI Agar, with white cap,
16x100mm glass tube, with
white cap, 5.5ml fill,

Minimum order: 5 packs,
20/pk..... L97

BHI Agar, 20x125mm glass flat
bottom tube glass, 10ml fill,

20/pk..... L35

BHI Agar with Blood Slant,
20x125mm glass flat bottom
tube glass, 10ml fill,

20/pk..... L31

BHI Agar with Blood, Chloramphenicol and Gentamicin

(Brain Heart Infusion)

Deep fill, 15x100mm plate,

26ml fill, 10/pk..... W65

20x125mm flat bottom glass
tube, slant, 20/pk..... L114

Bolton Broth

For the selective enrichment
of *Campylobacter* spp.

500ml polycarbonate wide

mouth bottle, 225ml fill,

10/pk..... U83

BG Agar with Novobiocin (Brilliant Green Agar)

For the selective isolation
and differentiation of
Salmonella spp.

15x100mm plate,
10/pk..... G175

15x100mm plate,
10/pk..... G75

BG Sulfapyridine Agar 10mg/L (Brilliant Green Sulfapyridine Agar)

For the selective isolation of
Salmonella spp.

15x100mm plate,
10/pk..... G87

BG Bile Broth

(Brilliant Green Bile Broth)

For the detection of coliforms
in water and food. Contains
Durham tube for gas detection.

16x125mm w/Durham tube,
with screw cap, 10ml fill,
20/pk..... K66

20x125mm Durham tube, with
Screw cap, 13ml fill,

20/pk..... K09

Brucella Agar with H & K (Hemin and Vitamin K)

For the cultivation of
anaerobic bacteria.

15x100mm plate, 10/pk..... A30

Brucella Broth

Prepared Culture Media

Recommended as a general purpose broth for the cultivation of microorganisms. 13x100mm tube, 1ml, optically clear, shatter resistant, polycarbonate tube, 20/pk..... R18
500ml Boston round glass bottle, 400ml fill, each..... U244

Brucella Broth with 15% Glycerol

For the preservation of organisms by freezing, packaged in a glass cryovial with a black screw-cap. For a plastic CryoVial™ with Brucella Broth in a honeycomb plastic freezer box, see Cat. no. S0541.
15x45mm flat bottom tube, glass, 2ml, 100/pk D04

BLEB Base, BAM Formulation (Buffered Listeria Enrichment Broth, Bacteriological Analytical Manual)

Requires selective supplement (Cat. no. K183).
400ml wide mouth jar, 225ml fill, 12/pk.U233

BLEB Selective Supplement (Buffered Listeria Enrichment Broth)

For use as a supplement with Buffered Listeria Enrichment Broth Base (BAM Formulation), Cat. no. U233.
16x100mm polycarbonate tube, 3.4ml fill, 20/pk..... K183

Buffered Peptone Water

A pre-enrichment used for increasing the recovery of injured *Salmonella* spp. from food and other samples prior to selective enrichment

and isolation.

Bottles

145ml polypropylene bottle, 90ml fill, 50/pk..... D080
145ml polypropylene bottle, 99ml fill, 50/pk..... D089
500ml polycarbonate bottle, 225ml fill, 10/pk.....U142
500ml polycarbonate bottle, 400ml fill, 10/pk.....U143

Tubes

16x125mm flat bottom tube, glass, 9ml fill, 20/pk..... K107
16x125mm tube, 10ml fill, 20/pk..... K195

Buffered Peptone Water, Modified, with Pyruvate

For the selective enrichment of enterohemorrhagic *E. coli* (EHEC) from food samples. ACV Supplement not included.
Double strength, 250ml polypropylene bottle, 125ml fill, 12/pk..... U389
Single strength, 500ml polypropylene bottle, 500ml fill, 10/pk U289

Butterfield Phosphate Buffer

For preparation of dilutions for plate count and other laboratory tests.
Jar
400ml wide mouth jar, 225ml fill, 12/pk U123

Polycarbonate Bottles

500ml, 450ml fill, 10/pk.. U150
500ml bottle, 400ml fill, 10/pk..... U154
500ml bottle, 500ml fill, 10/pk..... U190
500ml bottle, 250ml fill, 10/pk..... U195

Polypropylene Bottle

125ml bottle, 100ml fill, 12/pk..... U290
145ml flip-top bottle with hinged cap, 90ml fill, Dilu-Lok™ 150/pk..... D590
145ml bottle with hinged cap, 99ml fill, Dilu-Lok™ 150/pk..... D599

Tubes, Glass

16x125mm tube, 9.9ml fill, 20/pk..... K208
16x125mm tube, 9ml fill, 20/pk..... K109
20x125mm tube, 9ml fill, 20/pk..... K209

Tubes, Polypropylene

13ml, polypropylene tube, screw cap, 9ml fill, 20/pk..... K119

BCYE Agar without Cysteine (Buffered Charcoal Yeast Extract)

To aid in the presumptive identification of *Legionella* spp.
15x100mm plate, 10/pk... G108

Campy Cefex Agar, Modified

(Campylobacter Cefoperazone X-Factor)
For selective isolation of cephalothin-resistant *Campylobacter* spp. such as *C. jejuni*, *C. coli*, and *C. lari*
15x100mm plate, 10/pk... A122

CCFA AnaeroGRO™

(Cycloserine-Cefoxitin Fructose Agar)

This product is an enriched is an enriched selective and differential medium recommended for the cultivation and isolation of *Clostridium difficile*.

15x100mm plate, 18ml,
1 plate/mylar pouch.....AG501

CVA Campylobacter Agar

(Cefoperazone, Vancomycin, Amphotericin B)

For selective isolation of *Campylobacter* species, particularly *C. jejuni* and *C. coli*, from food samples

15x100mm plate, 10/pk.. A40

CIN Agar

(Cefsulodin-Irgasan-Novobiocin)

For the selective isolation of *Yersinia enterocolitica* and *Aeromonas* spp. No label on the bottom section to allow for automated readers.

15x100mm plate, 10/pk.....G220

15x100mm plate, 10/pk..... G20

CNA

(Columbia Agar with 5% Sheep Blood, Colistin and Nalidixic Acid)

For the selective isolation and differentiation of Gram-positive bacteria

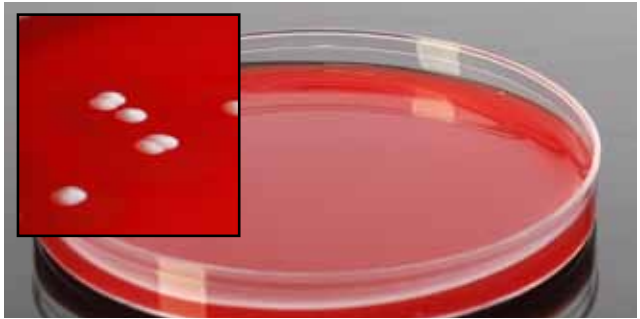
15x100mm plate,

10/pk.....A50

CNA Agar / MacConkey Agar Biplate

(Columbia Agar with 5% Sheep Blood, Colistin and Nalidixic Acid/MacConkey)

Section I: CNA Agar is recommended for use as a selective growth medium for



Staphylococcus aureus (ATCC® 25923) colonies growing on Columbia CNA Agar, Cat. no. A50.

the isolation and differentiation of Gram-positive cocci from clinical and non-clinical specimens which contain mixed flora.

Section II: MacConkey Agar is recommended for use as a selective and differential medium for the isolation of Gram-negative bacilli (including coliform organisms and enteric pathogens), on the basis of lactose fermentation.

15x100mm biplate:
10/pk..... J62
100/bx..... J62BX

Columbia Blood Agar

A general growth medium for cultivation and hemolytic determination of fastidious and non-fastidious microorganisms.

15x100mm plate.
10/pk..... A16
100/bx..... A16BX

Cooked Meat Medium

For the cultivation of aerobic, anaerobic, and microaerophilic organisms.
16x125mm tube, 10ml fill,
20/pk..... K19
20x125mm tube, 15ml fill,
20/pk..... K219

CT-SMAC for E. coli O157

(Cefixime, and Tellurite-MacConkey Agar with Sorbitol,)

For the selection and differentiation of enterohemorrhagic *E. coli* O157. This new formulation, used by many public health laboratories, includes addition of cefixime and tellurite for greater selectivity of *E. coli* O157.

15x100mm plates,
10/pk..... G129



Prepared Culture Media

D/E Neutralizing Media

(Dey/Engley)

For neutralizing antiseptics and disinfectants, as well as detecting organisms remaining after treatment. This media is specially suited for environmental sampling where neutralization of sanitizing chemicals is important.

Plate

15x100mm plate, 10/pk....G224

Tube

16x125mm flint glass, flat bottom tube with cap, 10ml fill, 20/pk..... K108

1L polycarbonate bottle, 750ml fill, 10/pk..... U76

Bottle

235ml wide mouth jar, 90ml fill, 12/pk U75
500ml boston round bottle, 400ml fill, 12/pkU168

DNase Agar without Indicator

(Deoxyribonuclease)

For the detection of deoxyribonuclease activity in Gram-negative and Gram-positive bacteria.
15x100mm plate, 10/pk.....G23

DNase Agar with Toluidine Blue

(Deoxyribonuclease)

For the detection of deoxyribonuclease activity in Gram-negative bacteria, especially *Serratia* spp. and *Moraxella catarrhalis*.
15x100mm plate, 10/pk..... G24
16x125mm tube, slant, 6.5ml fill, 20/pk..... K157

Escherichia coli (ATCC® 25922) colonies growing on EMB Agar, Levine, Cat. no. G25.

DRBC Agar

(Dichloran Rose Bengal Chloramphenicol)

Recommended for the enumeration of yeasts and molds.
15x100mm plate, 10/pk... G389
15x100mm plate, 26ml deep fill, 10/pk..... W89

EC Medium with MUG

(*Escherichia coli* with Methylumbelliferyl Glucuronide)

For the detection of *E coli* by fluorogenic means. Read with a fluorescent lamp (long wave, 366nm).
Glass tube, with Durham tube: 20x125mm tube, 13ml fill, 20/pk..... K18

EMB Agar Levine

(Eosin Methylene Blue)

For use as a selective and differential medium for the isolation of Gram-negative bacilli (including coliform organisms and enteric pathogens).
15x100mm plate, 10/pk..... G25

Esculin Agar

For determination of esculin hydrolysis by bacteria, such as group D streptococci, *Fusobacterium* spp. and *Bacteroides* spp.
16x100mm glass tube, slant, 6.5ml fill, 20/pk..... L29

FB Base

(Fraser Broth)

For the cultivation of *Listeria* spp.

Tube

Fraser broth, modified, 16x125mm glass tube, 10ml fill, 20/pk..... K98

Bottle

500ml polycarbonate bottle, 225ml fill, 10/pk.....U131

Fraser Broth Supplement, 1x100ml serum vial, Type 1 flint glass, with septum cap and Crimp-SealZ210

Fraser Broth used with Clearview Listeria Kit

Packaged in a plastic bottle, 500ml polycarbonate bottle with cap, 225ml, each U57

Fluid Thioglycollate Medium

For the cultivation of aerobic, microaerophilic, and anaerobic microorganisms.

Glass Tube

20x125mm tube, 15ml fill, 20/pk..... K84
20x125mm tube, 10ml fill, 20/pk..... K121

Glass Bottle

250ml wide mouth glass jar, 100ml fill, 12/pk U41
Fluid Thioglycollate without Indicator, 125ml glass bottle, 100ml fill, 20/pk..... U43

GN Broth, Hajna

(Gram Negative)

For the selective enrichment of *Salmonella* and *Shigella* spp.
Double strength, 20x125mm glass tube, 10ml fill,
20/pk..... K172

HE Agar

(Hektoen Enteric)

For the selective isolation of pathogenic Gram-negative enteric bacteria, such as *Salmonella* spp. and *Shigella* spp.
15x100mm plate, 10/pk..... G63
15x100mm quad-plate, 5ml fill per section, 10/pk.....J415

Indole Nitrate Broth

16x100mm polycarbonate tube, with Durham tube, 6ml fill,
20/pk.....K147

KIA Medium

(Kligler Iron Agar)

For use in differentiating certain members of the *Enterobacteriaceae* by demonstrating hydrogen sulfide production and the fermentation of dextrose and lactose.
13x100mm glass tube, 4.5ml slant, 20/pk..... R70
16x125mm glass tube, 8ml slant, 20/pk..... L70

Lactobacilli MRS Agar

(deMan, Rogosa and Sharpe)

For the selective isolation and cultivation of *Lactobacillus* spp.,
15x100mm plate,
10/pk..... K172

Lactose Broth

For the detection of coliforms. It can also be used to pre-enrich samples for the recovery of *Salmonella* species.

Polycarbonate Bottle

500ml bottle, 225ml fill,
10/pk.....U145
500ml bottle, 500ml fill,
10/pk.....U245

Jar

235ml wide mouth jar, 90ml fill, 12/pk U136
235ml wide mouth jar, 99ml fill, 12/pk U92
350ml wide mouth glass jar, 225ml fill, 12/pk U146

Glass Tube

Single Strength, 16x125mm tube, with Durham tube, 10ml fill, 20/pk..... K223
Double Strength, 20x125mm tube, with Durham tube, 10ml fill, 20/pk..... K137

Lactose Broth with Lecithin and Tween® 80

For the detection of coliforms in food, dairy, and water. It can also be used to pre-enrich samples for the recovery of *Salmonella* species.
500ml polycarbonate bottle, 500ml fill, 10/pk..... U246
1 liter polycarbonate bottle, 1,000ml fill, 10/pkU317

Lauryl Tryptose Broth

For the detection of coliform organisms.

Single Strength Glass Tube, with Durham Tube

16x125mm tube, 10ml fill,
20/pk..... K61
20x125mm tube, 10ml fill,
20/pk..... K33

Double Strength Glass Tube, with Durham Tube

20x125mm tube 10ml fill,
20/pk..... K32

LIA Slant

(Lysine Iron Agar)

For the differentiation of Gram-negative enteric pathogens from normal enteric flora by hydrogen sulfide production, lysine deaminase, and lysine decarboxylase reactions.
16x125mm glass tube, 8ml fill, 20/pk..... L25
13x100mm glass tube, 4.5ml fill, 20/pk R22

LIA Agar

(Lysine Iron Agar)

For use in differentiating certain members of the *Enterobacteriaceae*, especially *Salmonella* species, by demonstrating hydrogen sulfide production and the decarboxylation or deamination of lysine.
15x100mm plate, 10/pk..... G86

Litmus Milk Broth

For the determination of bacterial action upon milk.
16x100mm polycarbonate tube, 5ml fill, 20/pk..... K34

Listeria Enrichment Broth, Modified

For the selective isolation of *Listeria* spp.

Bottle

500ml polycarbonate bottle, 225ml fill, 10/pkU167

Listeria Enrichment Broth

125ml Boston Round glass bottle, 99ml fill, 20/pk..... U93

Prepared Culture Media

LPM Agar

Lithium Chloride Phenylethanol
Moxlactam Plating Agar

For the selective isolation of
Listeria monocytogenes.
15x100mm plate, 10/pk..... G92

MacConkey Agar

A selective and differential
medium for the isolation of
Gram-negative bacilli
(including coliform organisms
and enteric pathogens), on the
basis of lactose fermentation.
15x100mm plate, 10/pk... G603
16x125mm glass tube, 6.5ml
slant, 20/pk L30

MacConkey Agar with MUG

For presumptive identification
of *Escherichia coli*.
15x100mm plate, 10/pk..... G37

MYP Agar

(Mannitol Yolk Polymyxin)

For the enumeration of
Bacillus cereus
15x100mm plate, 10/pk....G147

Mannitol Salt Agar

For the selective isolation
and differentiation of
Staphylococcus spp. based
on high salt content and
mannitol fermentation.
15x100mm plate,
10/pk..... G602
16x100mm glass tube, 6.5ml
fill, 20/pk L32

McFarland Standard

The McFarland
Latex Standards
are prepared
from suspensions
of uniform latex
particles with
similar absorbance
values as barium
sulfate standards.
McFarland Latex
Standards are more
stable and offer a
significantly longer
shelf-life than the
original barium
sulfate standards.
8ml 16x100mm tube:

| | |
|-----------|------|
| #0.5..... | ML05 |
| #1..... | ML1 |
| #2..... | ML2 |
| #3..... | ML3 |
| #4..... | ML4 |
| #5..... | ML5 |
| #6..... | ML6 |
| #7..... | ML7 |
| #8..... | ML8 |

Moeller's Decarboxylase

For the differentiation of
Gram-negative enteric bacilli
based on the decarboxylation
reaction of amino acids.
16x125mm glass tube, 5ml fill,
20/pk:
With ArginineY42
With Ornithine..... Y44

Moeller's Decarboxylase Base
(control),
5ml, 16x125mm glass tube,
broth, 20/pkY41



MIO Medium

(Motility, Indole, Ornithine)

For the detection of motility,
indole production, and
ornithine-decarboxylase activity
of enteric bacilli.

16x100mm tube, 6.5ml deep,
20/pk..... Q20
13x100mm tube, 4ml deep,
20/pk R24

Modified Posse Differential Medium + Rifampicin

For use as a selective and
differential growth medium for
the cultivation of Shiga toxin-
producing *E. coli* (STEC).
15x100mm plate, 10/pk... G347

Moeller's Decarboxylase

For the differentiation of
Gram-negative enteric bacilli
based on the decarboxylation
reaction of amino acids.
16x125mm glass tube, 5ml fill,
20/pk:
With LysineY43
With Ornithine..... Y44

Motility Test Medium

For the detection of motility
in Gram-negative enteric
bacilli. TTC is added to
enhance visualization of
bacterial growth.
16x100mm glass tube,
8ml deep, 20/pk..... Q10
With TTC, 16x100mm glass
tube, 8ml deep, 20/pk..... Q11

Motility Nitrate Medium

For the detection of motility
and nitrate reduction of non-
fermentative bacilli.
13x100mm glass tube, 3ml fill,
20/pk..... Y23

MR-VP Broth

(Methyl Red and Voges-Proskauer)

For identification of Gram-negative bacilli.

16x100mm polycarbonate tube: 2ml fill, 20/pk..... K237
5ml fill, 20/pk..... K37

Mycoplasma Agar with Cefoperazone

For the detection of *Mycoplasma* spp. associated with bovine mastitis.

15x100mm plate, 10/pk... G212

Neomycin Anaerobic Blood Agar

(Blood Agar with 5% Sheep Blood, Hemin, Vitamin K, and Neomycin)

For the selective isolation of anaerobic bacteria.

15x100mm plate, 10/pk..... A62

Nitrate Broth

For the detection of nitrate reduction and indole production (Indole Nitrate only) in bacteria.

16x100mm polycarbonate tube, with Durham tube, 6ml fill, 20/pk..... K42



Escherichia coli growing in Nitrate Broth with Durham tube, 16x100mm tube, 6ml fill, Cat. no. K42

Nutrient Agar

For the cultivation of non-fastidious microorganisms.

15x100mm plate, 26ml deep fill, 10/pk W51
16x100mm glass tube, 6.5ml slant, 20/pk L20
15x100mm plate (without plate label), 10/pk W31

Nutrient Broth

A general purpose growth medium recommended

for use in the cultivation of nonfastidious microorganisms.

16x100mm polycarbonate tube, 5ml fill, 20/pk..... K43
20x150mm glass tube, 20ml fill, 20/pk.....K243
125ml polypropylene bottle, 100ml fill, 12/pk U234

Novobiocin NaCl

For use with *Shigella* Broth Base in the selective enrichment of *Shigella* spp.

16x100mm glass tube, 1000mg per tube, each..Z915A

MOX

(Oxford, Medium, Modified)

For selective isolation and differentiation of *Listeria monocytogenes*.

15x100mm plate, 10/pk..... G46

RSR, 15x100mm plate without label, reduced stacking ring for automated inoculating devices, 10/pk..... GA46

PALCAM Medium

For isolation and cultivation of *Listeria* species from foods.

15x100mm plate, 10/pk.....G149

PBS, pH 7.5

(Phosphate Buffered Saline)

Used to prepare dilutions for quantitative cultures.

1L polycarbonate bottle, 1L fill, 10/pk..... U138
16x125mm glass tube, 9ml fill, 20/pk..... K146
16x125mm tube, 9.9ml fill, 20/pk..... K163
12x75mm tube, 0.9ml fill, 100/pk.....K161

PBS, pH 7.3

(Phosphate Buffered Saline)

For use as a diluent.

13x100mm polycarbonate tube, 1ml fill, 20/pk R201

Peptone Broth (Peptone Water)

For use as a diluent and for the preparation of suspensions.

Contains 0.1% Proteose

16x125mm glass tube, 5ml fill, 20/pk.....K151
500ml polycarbonate bottle, 500ml fill, 10/pk..... U201

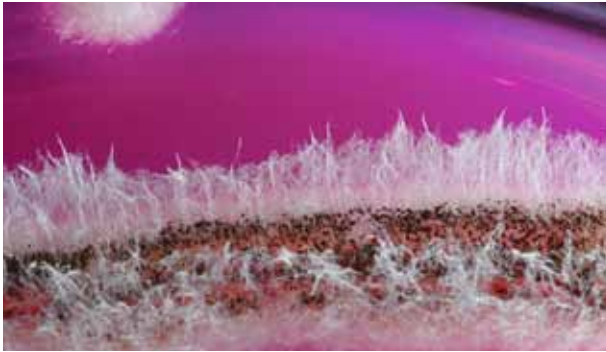
Phenol Red Broth

For the differentiation of microorganisms by carbohydrate fermentation.

16x125mm glass tube, with Durham tube, 10ml fill, 20/pk:
With Dextrose..... Y304
With Raffinose..... Y312
With SalicinY314
Base medium, Control, 9ml fill..... Y300



Prepared Culture Media



Aspergillus brasiliensis, formerly *Aspergillus niger*, (ATCC® 16404) colonies growing on Rose Bengal Agar with Chloramphenicol, Cat. no. W87.

PDA

(Potato Dextrose Agar)

Recommended for use in the cultivation of yeasts and mold and for the inducement of sporulation.

Plate

15x100mm plate, 26ml deep fill, 10/pk W60
15x150mm plate, 68ml fill, 10/pk..... H51

Glass Tube

20x125mm tube, 10ml slant, 20/pk..... L90
20x125mm tube, 18ml deep, 20/pk..... Q29

Bottle

250ml Boston Round bottle, 200ml fill, 12/pk U294
500ml Boston Round bottle, 400ml fill..... U394

PDA with TA

(Potato Dextrose Agar with Tartaric Acid)

For the cultivation and enumeration of fungi.

15x100mm plate, 28ml fill, 10/pk..... W96

Purple Broth

For the determination of carbohydrate fermentation by bacteria, especially enteric bacilli and *Enterococcus* spp. 16x125mm tube with Durham tube, 10ml fill, 20/pk:

With Salicin Y113
With Xylose Y117
With Sucrose Y115
With Trehalose.....Y116
With Rhamnose..... Y112

Pyrazinamidase Agar

For the differentiation of *Mycobacteria* spp. by pyrazinamidase activity. 16x125mm tube, deep, 5ml fill, 20/pk..... K158

Rapid Ornithine

For *Enterobacteriaceae* and *Staphylococcus lugdunensis*. Rapid Ornithine can be used to detect ornithine decarboxylase activity in as little as two to four hours. This test will assist in the identification of *Enterobacteriaceae* and *Staphylococcus lugdunensis*.

15x103mm polycarbonate tube, 1ml fill, optically clear, shatter resistant polycarbonate tube, 20/pk..... K279

Rappaport-Vassiliadis Broth

Used in the detection and isolation of *Salmonella* spp.

16x125mm tube, 10ml fill, 20/pk..... K246

Rose Bengal Agar with Chloramphenicol

For selective isolation and enumeration of fungi.

15x100mm plate, 24ml deep fill, 10/pk W87
15x150mm plate, 72ml fill, 10/pk..... H35

SabDex Agar

(Sabouraud Dextrose)

For the cultivation of fungi and yeasts.

Plate

15x100mm plate, Emmon's, 26ml fill, 10/pk W20
15x100mm plate, 26ml deep fill, 10/pk..... W701
15x150mm plate, 70ml fill, 10/pk..... H39

Glass Tube

20x125mm tube, 18ml deep, 20/pk..... Q31
20x125mm tube, 10ml slant, 20/pk..... L40

Glass Bottle

470ml Boston Round glass bottle, 200ml fill, 12/pkU227
500ml Boston Round glass bottle, 400ml fill, 12/pkU352

Polycarbonate Bottle

500ml bottle, 200ml fill, 10/pk.....U270
500ml bottle, 400ml fill, 10/pk..... U356
500ml bottle, 500ml fill, 10/pk.....U353

SabDex Agar with Lecithin and Tween® 80

(Sabouraud Dextrose)

For isolation and cultivation of fungi and the neutralization of disinfectants.

Plate

15x100mm plate, 26m deep fill, 10/pk..... W71

Tube

20x125mm pour glass tube, 18ml deep, 20/pk Q75

Bottle

500ml polycarbonate bottle, 400ml fill, 10/pkU175

470ml glass bottle, 400ml fill, 12/pk.....U431

Saline, 0.85%

For the preparation of isotonic suspensions and dilutions of microorganisms.

Polycarbonate Tube

13x100mm tube, 4ml fill, 20/pk..... R47

16x100mm tube, 1ml fill, 20/pk..... K248

Glass Tube

13x100mm tube, 2ml fill, 20/pk..... R55

16x125mm tube, 10ml fill, 20/pk..... K51

20x150mm tube, 10ml fill, 20/pk..... K58

Selenite Cystine Broth

For the selective enrichment of *Salmonella* spp. Cystine enhances growth of *Salmonella* spp.

16x125mm glass tube, 10ml fill, 20/pk..... K69

SIM Medium

(Sulfide-Indole-Motility)

For identification of Gram-negative bacilli based on sulfide production, indole formation, and motility.

16x100mm glass tube, 8ml deep, 20/pk Q30

Simmons Citrate Agar

For the detection of citrate utilization of Gram-negative enteric bacilli.

16x100mm glass tube, 10ml fill slant, 20/pk L80

SMAC

(MacConkey Agar with Sorbitol)

A selective and differential medium for the detection of enterohemorrhagic *E. coli* O157. 15x100mm plate, 10/pk..... G36

Standard Methods Agar

Plate Count Agar, for the cultivation and enumeration of microorganisms.

Plate

15x100mm plate, 10/pk..... G43

15x100mm plate, without label, 10/pk..... G44

Bottle

75ml glass bottle, 100ml fill, 20/pk..... U95

235ml glass bottle, 200ml fill, 12/pk U295

500ml glass bottle, 400ml fill, 12/pk..... U395

1500ml polycarbonate bottle, 500ml fill, 10/pk U297

Glass Tube

20x125 pour tube, 18ml deep fill, 20/pk Q21

Standard Methods Agar with BCP (Bromcresol Purple)

A non-selective medium recommended for the growth, enumeration and differentiation of acid-producing bacteria.

This medium is recommended by the American Public Health Association (APHA) to recover sub-lethally injured lactobacilli. 15x100mm plate, 10/pk....G143

Starch Agar

For the use in the determination of starch hydrolysis by microorganisms.

15x100mm plate, Minimum order: 10 packs 10/pk..... G294

Sterile Deionized Water

Sterile deionized water lacks ions such as sodium, calcium, iron, and copper. It is useful for general laboratory use and for the preparation of dilutions and suspensions.

125ml polypropylene bottle, 100ml fill,12/pk U85

Sulfite Polymyxin Milk Agar

For the selective isolation of *Clostridium* spp.

15x100mm plate, 10/pk....G251

TCBS Agar

(Thiosulfate Citrate Bile Salts Sucrose)

For the selective isolation of pathogenic vibrios

15x100mm plate, 10/pk..... G55

Prepared Culture Media

TSA

(Tryptic Soy Agar)

For cultivation of microorganisms.

Plate

15x100mm plate, 10/pk G60
15x100mm plate, 100/pk G60BX
15x100mm plate, USP,
10/pk G601
15x150mm plate, 69ml fill,
10/pk H19
15x100mm plate, without label,
10/pk G62
With Lecithin and Tween® 80,
15x100mm plate, 10/pk..... G41

Bottle

175ml Boston Round glass
bottle, 150ml fill, 20/pk..... U49
500ml polycarbonate bottle,
500ml fill, 10/pkU361
With Lecithin and Tween® 80,
500ml polycarbonate bottle,
400ml fill, 10/pkU174

Glass Tube

16x100mm tube, 6.5ml slant,
20/pk..... L60
With Lecithin and Tween® 80,
20x125mm tube, 18ml deep,
20/pk..... Q13
20x125mm tube, 18ml deep,
USP,
20/pk..... Q58

TSB

(Tryptic Soy Broth)

Glass Bottle

60ml bottle, 50ml fill,
24/pk..... U44
175ml bottle, 100ml fill,
20/pk..... U42
470ml bottle, 400ml fill,
12/pk U242
500ml bottle, 500ml fill,
each U62

Polycarbonate Bottle

235ml, 160ml fill, 12/pk... U171
500ml, 500ml fill, each..... U65
1 Liter, 1,000ml fill, 10/pk.. U67
TSB with Lecithin and Tween® 80,
500ml bottle, 500ml fill,
10/pk..... U229

Polycarbonate Wide Mouth Jar

235ml jar, 90ml fill,
12/pk..... U134
235ml jar, 90ml fill,
12/pk..... U133
235ml jar, 25ml fill,
12/pk..... U223
235ml jar, 100ml fill,
12/pk..... U71
470ml jar, 225ml fill,
each.....U80

TSB with Lecithin and Tween® 20 (Tryptic Soy Broth)

Glass Jar

250ml flint glass jar, 90ml, USP,
12/pk.....U241
250ml flint glass jar, 100ml fill,
12/pk.....U261

TSB 0.5% Lecithin, 4.0% Tween® 20 (Tryptic Soy Broth)

Polycarbonate Tube

13x100mm:
1ml fill, 20/pk R36
2ml fill, 20/pk R31
3ml fill, 20/pk R41
5ml fill, 20/pk R30

16x100mm:
2ml fill, 20/pk K131
5ml fill, 20/pk K89
9ml fill, 20/pk K88

Glass Tube

16x125mm, 10ml fill,
20/pk..... K82
20x125mm, 15ml fill,
20/pk..... K83

TSB with Lecithin and Tween® 80

20x125mm glass tube, 9ml fill,
20/pk..... K134

TSI Agar

(Triple Sugar Iron)

For identification of Gram-negative bacilli.

Glass Tube

13x100mm tube, 4ml slant,
20/pk..... R32
16x125mm tube, 8ml slant,
20/pk..... L50
16x100mm tube, 6ml,
20/pk..... L16

Tetrathionate Broth Base

For selective enrichment of *Salmonella* spp. Tetrathionate Broth Base, use with Iodine-Iodide Solution, Cat. no. Z129.
16x125mm glass tube,
10ml fill, 20/pk K65
1 Liter Polycarbonate bottle,
1,000ml fill, 10/pkU165

Tetrathionate Broth with Brilliant Green

For the selective enrichment of *Salmonella* spp. Use with iodine-iodide solution, Cat. no. Z129.
16x125mm glass tube, 10ml fill,
20/pk..... K164

Tetrathionate Brilliant Green Bile Broth

For the selective enrichment of *Salmonella* spp. Does not require use of iodine-iodide solution.
16x125mm glass tube, 10ml fill,
20/pk..... K273

Tryptone Glucose Extract Agar

For cultivation and maintenance

of bacteria.

15x100mm plate, 10/pk... G115

Urea Agar Slant

(Christensen's Urea)

For the detection of urease production in bacteria.

Glass Tube

13x100mm, slant, 3ml fill,
20/pk..... R42

16x100mm tube, slant, 5.5ml
fill, 20/pk L65

UVM Broth

(University of Vermont)

For selective cultivation of
Listeria monocytogenes.

Polycarbonate Bottle

500ml bottle, 225ml fill,
10/pk..... U153

500ml bottle, 500ml fill,
10/pk..... U51

UVM Modified Listeria Broth

(University of Vermont)

For the selective cultivation of
Listeria monocytogenes.

16x125mm tube, 3ml fill,
20/pk..... K96

Violet Red Bile Agar

For the detection and
enumeration of coliform.

15x100mm plate, 10/pk.... G78

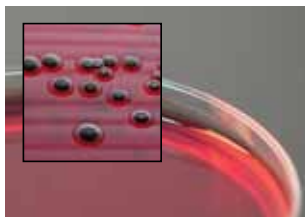
235ml boston round glass
bottle, 200ml fill, 12/pk... U296

Vogel and Johnson Agar

For selective isolation of
coagulase-positive, mannitol-
positive *Staphylococcus aureus*.
15x100mm plate, 10/pk....G193

XLD Agar

(Xylose Lysine Deoxycholate)



Salmonella enterica (ATCC® 12022) colonies growing on XLD Agar, Cat. no. G604.

For selective isolation of
pathogenic enteric Gram-
negative bacteria.

15x100mm plate, 10/pk... G604

XLT4 Agar

(Xylose-Lysine-Tergitol)

For selective isolation of non-
typhi *Salmonella* spp.

15x100mm plate, 10/pk....G165

XLT4 Agar/BG Agar with Sulfadiazine Biplate

(Xylose-Lysine-Tergitol/Brilliant Green)

Section I: XLT-4 Agar is a highly
selective plating medium for the
detection and isolation of non-
typhi *Salmonella* species.

Section II: BG Agar with
Sulfadiazine is recommended
for the isolation of *Salmonella*
spp., other than *S. typhi* and *S.*
paratyphi, from food samples,
especially eggs, following an
enrichment procedure.

15x100mm biplate, 10ml fill
10/pk.....J131

XLT4 Agar/BG Agar with Novobiocin Biplate

(Xylose-Lysine-Tergitol/Brilliant Green)

Section I: XLT-4 Agar is a highly
selective plating medium for the
detection and isolation of non-
typhi *Salmonella* species.

Section II: BG Agar with
Novobiocin is recommended
for the selective isolation of
Salmonella spp., other than
S. typhi, from non-clinical
samples.

15x100mm biplate, 10ml fill
10/pk.....J127

15x100mm biplate, 10ml fill

100/pk..... J127BX



Salmonella enterica (ATCC® 14028)
XLT4 Agar/Brilliant Green
Agar with Novobiocin
Biplate, Cat.no. J127BX

Chromogenic Culture Media

Hardy **CHROM**TM



"Color is my day-long obsession, joy, and torment." - Claude Monet

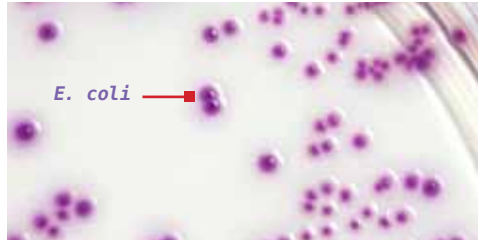
HardyCHROMTM ECC (*E. coli*/Coliforms)

HardyCHROMTM ECC (*E. coli*-Coliforms) is a chromogenic medium recommended for the detection, differentiation, and enumeration of *Escherichia coli* and other coliforms in food or water samples based on colony color.

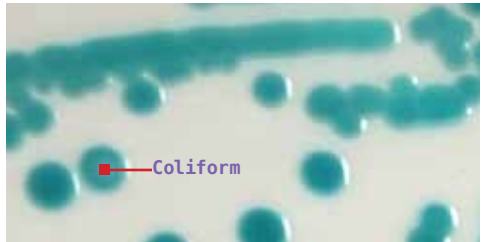
Routine testing to assess the sanitary quality of food and water is directed at the detection and enumeration of indicator organisms rather than pathogens. The coliform group of organisms is recognized as the principal indicator of unsanitary conditions. They are present in the intestinal tract of man and other animals, and non-fecal coliforms are found in many areas of the environment, including in soil and on plants.

- Test allows for the detection of *E. coli* and other coliforms.
- *E. coli* can be identified as pink to violet colored colonies on the plate.
- Other coliform bacteria appear as turquoise colonies.
- Organisms other than coliforms or *E. coli* (including approximately 4% of *E. coli* strains and most O157 strains) appear as white or colorless colonies.
- Formula contains chromogenic substrates which allow specific microorganisms to be recognized by their colony color.
- Selective agents have been added to inhibit growth of Gram-positive and other non-coliform bacteria.

15x100mm plate, 10/pk.....G303



Escherichia coli (ATCC[®] 25922) colonies growing on HardyCHROMTM ECC incubated aerobically for 24 hours at 35 °C.



Klebsiella pneumoniae (ATCC[®] 13883) colonies growing on HardyCHROMTM ECC incubated aerobically for 24 hours at 35 °C. Typical of all coliforms.

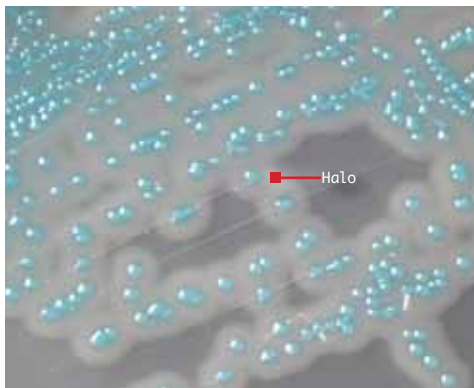
HardyCHROM™ Listeria

HardyCHROM™ Listeria is a chromogenic medium recommended for the selective isolation, differentiation, and enumeration of *Listeria monocytogenes* from food and environmental samples by colony color and appearance.

HardyCHROM™ Listeria contains specific chromogenic substrates that result in all species producing turquoise colored colonies when the substrate is hydrolyzed by specific enzymes. Furthermore, this medium is able to detect the phospholipase activity (resulting in the halo effect) specific to the two pathogenic *Listeria* species: *L. monocytogenes* and *L. ivanovii*.

- These two species will produce turquoise colored colonies surrounded by an opaque white halo.
- While *L. ivanovii* is rare in clinical samples, further tests are needed to definitively differentiate between these two species.
- Organisms other than listeria are inhibited or grow as colorless or turquoise colonies without halos.

15x100mm plate, 10/pk..... G317



Not for human diagnostic use.

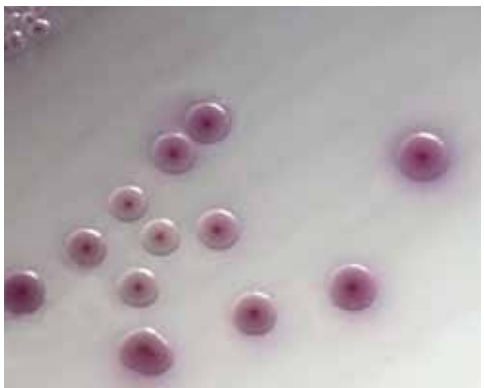
HardyCHROM™ O157

HardyCHROM™ O157 is a selective and differential medium recommended for the isolation of enterohemorrhagic *E. coli* O157 from food and environmental sources. Chromogenic substances in the medium facilitate detection by color.

HardyCHROM™ O157 was developed as a medium for differentiating *E. coli* O157 from non-*E. coli* O157 based on colony color, due to the presence of specific chromogenic substrates. These chromogens are biochemical compounds that produces a visible color change when degraded by specific microbial enzymes.

- *E. coli* O157 produces purple-pink colored to mauve colonies on the plate.
- Organisms other than *E. coli* O157 will be inhibited or appear as blue colonies.
- Test provides an initial screen intended to isolate colonies for further testing.
- It is necessary to confirm isolated purple-pink colonies taken from HardyCHROM™ O157 with a latex agglutination test (Cat. no. PL070HD), antisera (Cat. no. 295798), or other test methods for complete identification.
- Testing for the H7 antigen (Cat. no. 221591, 3ml or Cat. no. 295569, 5ml).

15x100mm plate, 10/pk..... G305



E. coli O157 (ATCC® 35150) produces smooth purple-pink to mauve colonies at 24 hours.

Chromogenic Culture Media

HardyCHROM™ Salmonella

HardyCHROM™ Salmonella is a chromogenic medium recommended for the selective isolation and differentiation of *Salmonella* spp. from other members of the *Enterobacteriaceae* family based on colony color.

Selective agents inhibit the growth of Gram-positive organisms. Chromogenic substrates are broken down by specific microbial enzymes resulting in distinct colony color.

- *Salmonella* species use only one of the chromogens producing deep pink to magenta colored colonies.
- Bacteria other than *Salmonella* spp. may utilize the other chromogenic substrates and produce blue colonies.
- If none of the substrates are utilized, natural or white colored colonies will be present.
- *E. coli* will be partially inhibited.

15x100mm plate, 10/pk..... G309



Salmonella enterica (ATCC® 14028) colonies incubated aerobically for 24 hours at 35°C. Typical of all *Salmonella* spp.

HardyCHROM™ Staph aureus

HardyCHROM™ Staph aureus allows for the rapid and reliable detection of *Staphylococcus aureus*. This medium contains a special chromogenic mix that allows for the differentiation of *Staphylococcus* spp.

- *Staphylococcus aureus* can be identified as smooth, pink colored colonies on the plate.
- Other organisms may appear as colorless, blue, or cream colonies, or will be inhibited.
- *Staphylococcus saprophyticus* will appear as turquoise colored colonies.
- *Staphylococcus epidermidis* will be inhibited.

15x100mm plate, 10/pk..... G311



Staphylococcus saprophyticus (ATCC® 15305) colonies incubated aerobically for 24 hours at 35°C.



Staphylococcus aureus (ATCC® 25923) colonies incubated aerobically for 24 hours at 35°C.

Stains & Reagent



Anaerobe Nitrate Reagent A, Cat. no. Z134

Anaerobe Nitrate Reagent

Sulfanilic Acid for nitrate reduction test. Hardy Diagnostics Anaerobe Nitrate Reagents A, B, and C are recommended for use in determining the nitrate reduction reaction of anaerobic bacteria.

Anaerobe Nitrate Reagent A, 15ml.....Z134
 Anaerobe Nitrate Reagent B, 15ml.....Z135

Catalase Reagent for Anaerobes

A high strength 15% solution of hydrogen peroxide especially recommended for the detection of catalase activity in anaerobic bacteria.

Hydrogen Peroxide:
 15%, 15ml dropper bottle..Z262
 3%, 15ml, dropper bottle Z62
 3%, H₂O₂, 60ml bottle..... Z76

Ethanol 70% (Ethyl Alcohol)

Reagent grade (70%), 945ml.....VXB032
 Ethyl Alcohol, 200 Proof, 500ml.....ET107
 Reagent Alcohol, 90% Ethyl, 1 gallon.....374B128



PYR Reagent A, Cat. no. Z127

Methanol

945mlVMT032

PYR Reagent

For use in conjunction with PYR testing for the detection of pyroglutamate aminopeptidase found in group A streptococci (*Streptococcus pyogenes*) and group D enterococci. The PYR Reagent combines with beta-naphthyl amide released during pyroglutamate aminopeptidase (PYR) activity to form a pink to red pigment. See Z75 for the complete kit.

15ml, dropper bottle, cinnamaldehyde Z127



PYR Test Kit, Cat. nos. Z75, Z175, Z275

PYR Test Kit

A rapid test for group A strep and enterococcus, both of which are positive, all other streps are negative, a more reliable test for Group A Strep than bacitracin, the L-pyrrolidonyl -B-naphthylamide impregnated disks serve as a substrate for the detection of pyrrolidonyl peptidase, positives turn red, takes only 3 minutes, on large $\frac{3}{8}$ " disks, includes PYR reagent (cinnamaldehyde).

25 tests, on paper disks, with 5ml chromogenic developer..... Z75

100 tests, with 20ml chromogenic developer, on paper disks.....Z175

With 15ml chromogenic solution and test cards, 25 cards that have 3 tests/card, total of 75 tests/kit..... Z275



Gram Stain Advanced™ Kit, Cat. no. GK400A

Gram Stain Advanced™ Kit

Used to stain microorganisms from cultures or specimens by the differential Gram method. Kit includes:

- Enhanced Crystal Violet
- Iodine, Stabilized
- Decolorizer, Fast
- Enhanced Counterstain

4x250ml bottlesGK400A

Iodine-Iodide Solution For Tetrathionate Broth

Iodine-Iodide Solution to be added to Tetrathionate Broth. For the selective enrichment of *Salmonella* spp.

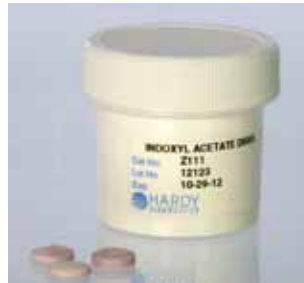
990ml polycarbonate bottle Z139

50ml polycarbonate bottle Z129

Indoxyl Acetate Disks

For the identification and differentiation of *Campylobacter*. Look for a blue to blue-green color within only 30 minutes.

25 disks tests/pk..... Z111



Indoxyl Acetate Disks, Cat. no. Z111



OxiStrips™, Oxidase Strip

Paper strips for testing the oxidase reaction. Simply place a drop of water on the strip, then rub on bacteria. Positives turn dark purple within 15 seconds.

25 strips/pk Z93

25 swabs/vial Z193

Tween® 80

General purpose reagent.

250ml wide mouth jar, 5ml fill, Each..... U11
500ml fill, 500ml polycarbonate bottle.....U180





Cryogenic Vials™
CryoSavers™

Freeze store your organisms long term for QC Testing!

Convenient

Ready-to-use media with cryopreservatives saves you time and expense.

New Packaging

An advanced durable plastic box that holds 100 vials has numbered compartments and a hinged lid to protect your CryoSavers™. The compact size saves valuable freezer space. CryoSavers™ are also available in smaller boxes (81 vials) that fit into standard stainless steel freezer racks.

Easy-to-use

Ergonomically designed caps feature large ridges for ease of opening.

Formula Options

Available formulas include Skim Milk or Brucella Broth with Glycerol cryopreservative. The Brucella Broth is a highly enriched general purpose growth media that enhances the long term viability of your specimen.

Easy Labeling

Each vial has a blank white area that can be written on for specimen identification. In addition, each box comes with a moisture-proof card on which to record the contents of each vial.



Brucella Broth with Glycerol

10% Glycerol, 2ml cryovial, 1.2ml fill, Blue cap, with beads 100/box.....CS100B

Empty Box

The racks are three point hinged with a clasp for a secure closure, holds 1.5 - 2.0ml cryovials and microtubes. Box features molded grid lines on the lid, and have imprinted coordinates on the base and raised coordinates on the box. 100 well freezer storage.....TR100N

Skim Milk

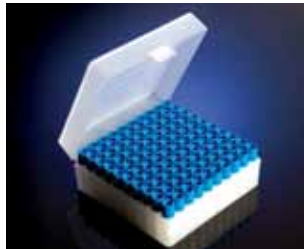
2ml cryovial, 1.5ml fill, Natural cap, without beads, 100/bx.....CSM100

Skim Milk with Glycerol

2ml cryovial, 1.5ml fill, Natural cap, without beads, 100/bx.....CSMG100

Brucella Broth with Glycerol

CryoSavers™ are also available in smaller Nalgene boxes (81 vials) that fit into standard stainless steel freezer racks. 81 vials/box: Blue cap, with beads, 2ml cryovial, 1.2ml fill.....CS81B



Workstation

To suit your preference, available accessories include a workstation with a vial locking design, needles for handling beads. Workstation, securely holds 40 vials, each.....802501

Needle, nichrome with aluminum handle (insulated sleeve), 5/pk3060



Work station allows for one handed cap removal.

Dehydrated Culture Media



Hardy Diagnostics' dehydrated culture media, CRITERION™, is formulated to meet or exceed the highest quality standards. Choose from 250 standard formulas or request custom blending to your specifications. The innovative packaging designs and overall reliability make CRITERION™ the logical choice for culture media in your laboratory.



| Product (Numbers indicate supplements are needed) | 2L Mylar® Zip-Bag* | 500gm Bottle | 2kg Bucket | 10kg Bucket |
|---|-----------------------|-----------------|---------------|-------------|
| Ampicillin Dextrin Agar Base ¹⁶ | C7580 | C7581 | C7582 | C7583 |
| Bacillus Cereus Agar Base ¹² | C5060 | C5061 | C5062 | C5063 |
| Baird-Parker Agar Base ³ | C5080 | C5081 | C5082 | C5083 |
| Bismuth Sulfite Agar | C5210 | C5211 | C5212 | C5213 |
| Brain Heart Infusion Broth | C5140 | C5141 | C5142 | C5143 |
| Brilliant Green Agar | C5240 | C5241 | C5242 | C5243 |
| Brilliant Green Agar, Modified | C8690 | C8691 | C8692 | C8693 |
| Brilliant Green Bile Broth | C5250 | C5251 | C5252 | C5253 |
| Brilliant Green Bile Broth with MUG | C5280 | C5281 | C5282 | C5283 |
| Buffered Listeria Enrichment Broth Base ¹⁰ | C7800 | C7801 | C7802 | C7803 |
| Buffered Listeria Enrichment Broth Base ³⁰ | C7800 | C7801 | C7802 | C7803 |
| Buffered Peptone Water | C5320 | C5321 | C5322 | C5323 |
| Buffered Peptone Water (Modified) | C6350 | C6351 | C6352 | C6353 |
| Campylobacter Agar Base ⁴ | C5330 | C5331 | C5332 | C5333 |
| Cetrimide Selective Agar Base ⁷ | C5370 | C5371 | C5372 | C5373 |
| Columbia Agar Base | C5450 | C5451 | C5452 | C5453 |
| Corn Meal Agar | C5490 | C5491 | C5492 | C5493 |
| D/E Neutralizing Agar, Modified | C5520 | C5521 | C5522 | C5523 |
| D/E Neutralizing Broth | C7370 | C7371 | C7372 | C7373 |
| Dextrose Tryptone Agar | C5620 | C5621 | C5622 | C5623 |
| EC Medium | C5690 | C5691 | C5692 | C5693 |
| EC Medium Base ⁵ , Modified | C8090 | C8091 | C8092 | C8093 |
| EC Medium with MUG | C5680 | C5681 | C5682 | C5683 |
| EE Broth Mossel | C8710 | C8711 | C8712 | C8710 |
| EMB Agar, Levine | C5700 | C5701 | C5702 | C5703 |
| m Endo LES Agar | C7410 | C7411 | C7412 | C7413 |

| Product (Numbers indicate supplements are needed) | 2L Mylar® Zip-Bag⁺ | 500gm Bottle | 2kg Bucket | 10kg Bucket |
|--|--|-------------------------|-----------------------|--------------------|
| Fraser Broth Base ⁵ | C5780 | C5781 | C5782 | C5783 |
| Half Fraser Broth Base ¹² | C8040 | C8041 | C8042 | C8043 |
| Hektoen Enteric (HE) Agar | C5840 | C5841 | C5842 | C5843 |
| Kligler Iron Agar | C5910 | C5911 | C5912 | C5913 |
| Lactobacilli MRS Broth | C5930 | C5931 | C5932 | C5933 |
| Lactobacillus Selective Agar Base | C6050 | C6051 | C6052 | C6053 |
| Lactose | C5950 | C5951 | C5952 | C5953 |
| Lactose Broth | C5940 | C5941 | C5942 | C5943 |
| Lauryl Tryptose Broth | C5980 | C5981 | C5982 | C5983 |
| Lauryl Tryptose Broth with MUG | C5990 | C5991 | C5992 | C5993 |
| Lethen Broth, Modified | C7640 | C7641 | C7642 | C7643 |
| Listeria Enrichment Broth | C6030 | C6031 | C6032 | C6033 |
| Listeria Enrichment Broth, Modified | C6360 | C6361 | C6362 | C6363 |
| LBS (Lactobacillus Select) Agar Base | C6050 | C6051 | C6052 | C6053 |
| m PA-C Agar | C7960 | C7961 | C7962 | C7963 |
| Malt Extract Agar | C6200 | C6201 | C6202 | C6203 |
| MYP Agar Base | C7400 | C7401 | C7402 | C7403 |
| Nutrient Agar | C6460 | C6461 | C6462 | C6463 |
| Nutrient Broth No. 2 | C8820 | C8821 | C8822 | C8823 |
| Orange Serum Agar | C7510 | C7511 | C7512 | C7513 |
| Oxford Listeria Agar Base | C6520 | C6521 | C6522 | C6523 |
| Pancreatic Digest of Casein (Casein Peptone) | C6530 | C6531 | C6532 | C6533 |
| Plate Count Agar, Modified | C8190 | C8191 | C8192 | C8193 |
| Peptic Digest of Animal Tissue | C7480 | C7481 | C7482 | C7483 |
| Peptone Water | C6570 | C6571 | C6572 | C6573 |
| Potato Dextrose Agar (PDA) | C6620 | C6621 | C6622 | C6623 |
| Presence-Absence Broth | C6630 | C6631 | C6632 | C6633 |
| Pseudomonas Isolation Agar Base | C6680 | C6681 | C6682 | C6683 |
| R2A Agar | C6720 | C6721 | C6722 | C6723 |
| Rappaport-Vassiliadis Medium Base (MRSV) ¹⁰ (semi-solid) | C6740 | C6741 | C6742 | C6743 |
| Reinforced Clostridial Medium | C8720 | C8721 | C8722 | C8723 |
| SabDex with Lecithin and Tween® | C6800 | C6801 | C6802 | C6803 |
| Selenite Cystine Broth | C6920 | C6921 | C6922 | C6923 |
| Shigella Broth Base | C9150 | C9151 | C9152 | C9153 |
| Skim Milk Powder | C6960 | C6961 | C6962 | C6963 |
| Sobaraud Dextrose Broth | C7560 | C7561 | C7562 | C7563 |
| Sodium Chloride | C7720 | C7721 | C7722 | C7723 |
| Standard Methods Agar | C6980 | C6981 | C6982 | C6983 |
| Sucrose | C7020 | C7021 | C7022 | C7023 |
| Tetrathionate Broth Base ⁸ | C7060 | C7061 | C7062 | C7063 |
| Thiogelatin Medium | C8240 | C8241 | C8242 | C8243 |

| Product (Numbers indicate supplements are needed) | 2L Mylar® Zip-Bag ⁺ | 500gm Bottle | 2kg Bucket | 10kg Bucket |
|--|-----------------------------------|-----------------|---------------|-------------|
| Thioglycollate Medium without Indicator | C7080 | C7081 | C7082 | C7083 |
| Triple Sugar Iron (TSI) Agar | C7110 | C7111 | C7112 | C7113 |
| Tryptic Soy Agar (TSA) | C7120 | C7121 | C7122 | C7123 |
| Tryptic Soy Agar with Lecithin and Tween® | C7130 | C7131 | C7132 | C7133 |
| Tryptic Soy Broth (TSB) | C7140 | C7141 | C7142 | C7143 |
| Universal PreEnrichment Broth | C7220 | C7221 | C7222 | C7223 |
| UVM | C7240 | C7241 | C7242 | C7243 |
| Violet Red Bile Agar (VRBA) | C7260 | C7261 | C7262 | C7263 |
| Violet Red Bile Agar with MUG | C7250 | C7251 | C7252 | C7253 |
| XLD Agar | C7320 | C7321 | C7322 | C7323 |
| XLT4 Agar Base ^o | C8030 | C8031 | C8032 | C8033 |

+ Mylar® Zip-bags contain a pre-weighed amount of blended powder, sufficient to prepare two liters of finished product (after water is added) unless noted by an asterisk “*”.

Tween® is a registered trademark of ICI Americas, Inc.

See our website for a complete listing of all our Criterion formulations!

Supplements and Antibiotics

| | Product | Quantity | Cat. no. |
|----|--|-----------------------------------|----------|
| 1 | Egg Yolk Suspension | 1x100ml | R450290 |
| 2 | Bacillus Cereus Selective Supplement Polymyxin B | 10x50,000IU/vial | SR099E |
| 4 | Campylobacter Selective Supplement (Karmali) | 10 vials - 2 vials/L of medium | SR167E |
| 5 | Fraser Supplement | 10 vials - 2 vials/L of medium | SR156E |
| 6 | VCAT Selective Supplement | 10 vials - 2 vials/L of medium | SR104B |
| 7 | MaX-V by Hardy Diagnostics | 10 vials - 2 vials/L of medium | Z216 |
| 8 | Middlebrook OADC | 1x100ml | U98 |
| 9 | Listeria Selective Supplement | 10 vials - 2 vials/L of medium | SR140E |
| 10 | Sodium Novobiocin | 10 x 10mg | SR181E |
| 11 | Tween® 20 | 1x40ml | PS20 |
| 12 | Fraser Broth Supplement | 100ml serum bottle, 100ml fill | Z210 |
| 16 | Ampicillin Selective Supplement | 10 vials | SR136E |
| 30 | Buffered Listeria Enrichment Broth Supplement | 10 vials - 1 vial per 2.25 liters | SR0149 |

Tween® is a registered trademark of ICI Americas, Inc.

Blood, Rabbit, Defibrinated

Our animal blood is obtained from a controlled herd that is kept free of antimicrobial drugs and disease. All animals are maintained in a healthy condition and treated humanely in accordance with government regulations. Fresh blood is delivered to Hardy Diagnostics every week. We ship to our customers every Tuesday.

All types of animal blood and packaging configurations are available.

| | |
|-------------------------------|--------|
| Rabbit, 100ml, screw cap..... | DRB100 |
| Sheep, 100ml, screw cap..... | DSB100 |
| Horse, 100ml, screw cap | DHB100 |

Visit our website for a complete selection of over 100 different blood supplements!

Filter, Sterile

Filters withstand normal syringe pressures up to 75psi.

- Maximum operating temperature: 55°C.
- Color-coded by pore size for easy identification.
- Diameter: 25mm. Non-pyrogenic. Luer Lock connection.
- Individually wrapped, 0.2um, 25mm, 50/pk.....4192

FreshClave™

Simple and convenient to use method of eliminating the unpleasant odors associated with the disposal of laboratory waste. Presented in a soft gelatin capsule, containing a concentrated liquid fragrance that melts in the heat of autoclave cycles. A pleasant fragrance is released that changes and eliminates odors, normally created during autoclaving, providing a comfortable, fragrance work environment.

Autoclave deodorant, eliminates autoclave odors, one gel cap will deodorize 7 to 10 cubic feet, 100 gel caps/bottle:

| | |
|--------------------|-------|
| Apple scented..... | FC604 |
| Lemon scented..... | FC605 |
| Peach scented..... | FC603 |

SporAmpule® Liquid Biological Indicator, for Steam Sterilization

An error-free BI (Biological Indicator) system certified for use with steam sterilization processes. After processing in a normal load, the SporAmpule® is incubated at 56°C for 48 hours. A purple to yellow color change and visible turbidity of a processed SporAmpule® indicates sterilizer failure.

| | |
|-------------|--------|
| 20/pk..... | BST20 |
| 100/pk..... | BST100 |



Cat. no. DRB100



Cat. no. 4192



FreshClave™



Cat. no. BST20

For Microbiology Testing Process Quality Assurance

EZ-FPC™

Lyophilized pellets of more commonly encountered food borne organisms. EZ-FPC™ are quantitative organism preparations used as food process controls for the verification of methodology, and media quality. Each vial contains ten pellets of a single, lyophilized microorganism at a specified concentration, detailed instructions, and a certificate of assay.



Over 5,000 strains available on our website! www.HardyDiagnostics.com

| Cat. no. | Description (vials of 10 pellets) | Ref. no.* |
|----------|---|----------------|
| 0265FPC | <i>Alicyclobacillus acidoterrestris</i> | 49025** |
| 0260FPC | <i>Arthrobacter psychrolactophilus</i> | 700733** |
| 0392FPC | <i>Aspergillus brasiliensis</i> | 16404** |
| 0998FPC | <i>Bacillus cereus</i> | 10876** |
| 0674FPC | <i>Clostridium perfringens</i> | 12919** |
| 0756FPC | <i>Cronobacter muytjensii</i> | 51329** |
| 0597FPC | <i>Enterobacter aerogenes</i> | NCIMB 10102 |
| 0306FPC | <i>Enterobacter aerogenes</i> | 13048** |
| 0497FPC | <i>Enterococcus faecalis</i> | 7080** |
| 0617FPC | <i>Escherichia coli</i> | 35150** |
| 0795FPC | <i>Escherichia coli</i> | 43888** |
| 0791FPC | <i>Escherichia coli</i> | 51813** |
| 0813FPC | <i>Lactobacillus fermentum</i> | 9338** |
| 0989FPC | <i>Lactobacillus rhamnosus</i> | 9595** |
| 0814FPC | <i>Listeria innocua</i> | 33090** |
| 0687FPC | <i>Listeria monocytogenes</i> | 19115** |

| Cat. no. | Description (vials of 10 pellets) | Ref. no.* |
|----------|--|-----------|
| 0254FPC | <i>Listeria monocytogenes</i> Cornell University | SLR 2249 |
| 0794FPC | <i>Penicillium aurantiogriseum</i> | 16025** |
| 0693FPC | <i>Pseudomonas aeruginosa</i> | 15442** |
| 0698FPC | <i>Saccharomyces cerevisiae</i> | 2601** |
| 0595FPC | <i>Salmonella bongori</i> | 43975** |
| 0817FPC | <i>Salmonella enterica</i> subsp. <i>enterica</i> serovar Abaetetuba | 35640** |
| 0826FPC | <i>Salmonella enterica</i> subsp. <i>enterica</i> serovar Abaetetuba Silliker® | SLR 156 |
| 0348FPC | <i>Shigella flexneri</i> | 9199** |
| 0360FPC | <i>Staphylococcus aureus</i> subsp. <i>aureus</i> | 25923** |
| 0485FPC | <i>Staphylococcus aureus</i> subsp. <i>aureus</i> | 6538** |
| 0909FPC | <i>Yersinia enterocolitica</i> subsp. <i>enterocolitica</i> | 27729** |
| 0803FPC | <i>Zygosaccharomyces rouxii</i> | 28253** |

KWIK-STIK™

The KWIK-STIK™ is well-known for its clever design and accurate, repeatable results. Each KWIK-STIK™ device features a single QC microorganism strain in a lyophilized pellet, a reservoir of hydrating fluid, and an inoculating swab. For added convenience, a peel-off identification label is included for easy documentation.

K= KWIK-STIK™ 6 Pack

| Cat. no. | Description | Ref. no.* |
|----------|--------------------------------|-----------|
| 0198K | <i>Bacillus cereus</i> | 33019** |
| 0198K | <i>Campylobacter jejuni</i> | 29428** |
| 0318K | <i>Clostridium perfringens</i> | 13124** |
| 0129K | <i>Listeria monocytogenes</i> | 13932** |
| 0363K | <i>Salmonella enterica</i> | 14028** |



KWIK-STIK™

ATCC® Licensed Derivative™

*The ATCC Licensed Derivative Emblem, the ATCC Licensed Derivative word mark, and the ATCC catalog marks are trademarks of ATCC. Microbiologics® Inc. is licensed to use these trademarks and to sell products derived from ATCC® cultures.

Environmental Monitoring

Contact Plates

Baird Parker Agar

For the selective isolation and enumeration of coagulase-positive staphylococci (*Staphylococcus aureus*) on environmental surfaces.
15x60mm contact plate, 10/pk P16

D/E Neutralizing Agar

For the enumeration of environmental organisms. The media is able to neutralize most antiseptics and disinfectants that may inhibit the growth of environmental organisms.
15x60mm contact plate, 10/pk P99

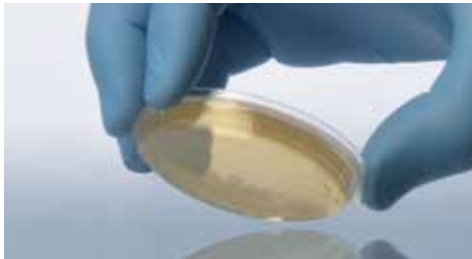
EMB (Eosin Methylene Blue)

For isolation and differentiation of Gram-negative bacilli from environmental surfaces.
15x60mm contact plate, 10/pk P09

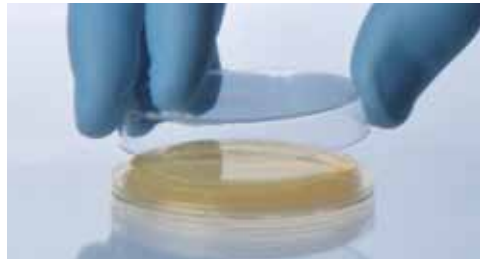


HardyCHROM™ ECC

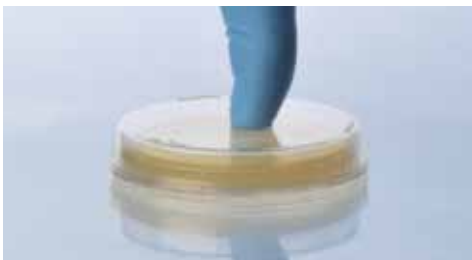
A chromogenic medium for the detection, differentiation, and enumeration of *Escherichia coli* and other coliforms from environmental surfaces (*E. coli* turns blue; coliforms turn red).
15x60mm plate contact plate, 10/pk P17



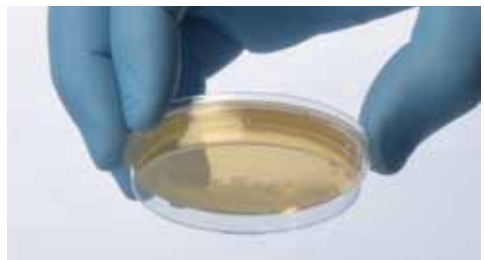
1 Gently press plate to surface to collect sample.



2 After sample collection, place lid on plate.



3 Tap lid into place.



4 Lid is secure.

Malt Extract

For the cultivation and isolation of yeasts and molds.

With Chloramphenicol,
15x60mm contact plate, 0.01%
10/pk..... P80
15x60mm contact plate,
10/pk..... P93

MSA, USP

Mannitol Salt Agar

For the selective isolation and differentiation of *Staphylococcus* spp. For environmental surfaces.
15x60mm contact plate,
10/pk..... P98

PDA with Chlortetracycline

Potato Dextrose Agar

For use in the cultivation of yeast and mold and for the inducement of sporulation.
15x100mm plate, 26ml fill,
10/pk..... W93

R2A Agar

R2A is recommended for enumeration of heterotrophic bacteria from environmental surfaces.
15x60mm contact plate,
10/pk..... P32

Rose Bengal Agar with Chloramphenicol

For the selective isolation and enumeration of yeasts and molds from environmental surfaces.
15x60mm contact plate,
10/pk..... P42



SabDex Agar

Sabouraud Dextrose

For the cultivation of fungi from environmental surfaces.
15x60mm contact plate,
10/pk..... P36

Standard Methods Agar with Lecithin and Tween® 80

For the enumeration of aerobic bacteria from environmental surfaces. Lecithin and Tween® 80 neutralize disinfectants.
15x60mm contact plate,
10/pk..... P51

TSA with Lecithin and Tween 80®

Tryptic Soy Agar

For the general cultivation of microorganisms from environmental surfaces. Lecithin and Tween® 80 neutralize disinfectants.
15x60mm contact plate,
10/pk..... P34

TSA with 5% Sheep Blood

Tryptic Soy Agar

For the general cultivation of microorganisms from environmental surfaces. 5% sheep blood in TSA base.
15x60mm contact plate,
10/pk..... P33

Environmental Sampling Swabs



EnviroTrans™, Swab Kit (Pre-moistened Ready-to-use)

A ready-to-use swab and tube pre-filled with your choice of five solutions to fit your specific needs! The entire unit is terminally sterilized. Collect and transport your environmental sample with efficiency and ease. Simply remove the cap, which is attached to the dacron swab. Collect your sample by swabbing the surface, recap, and send to the lab. Each EnviroTrans™ tube contains broth or buffer (see listing). Excellent for detection or enumeration of microorganisms from environmental surfaces or equipment.

| | |
|--------------------------------------|-------|
| EnviroTrans™ Neutralizing Buffer: | |
| 2ml, 20/bx | SRK20 |
| 5ml, 20/bx | SRK15 |
| EnviroTrans™ Lethen Broth, | |
| 5ml, 20/bx | SRK25 |
| EnviroTrans™ Saline, 0.85%, | |
| 0.5ml, 20/bx | SRK05 |
| 2ml, 20/bx | SRK30 |
| 5ml, 20/bx | SRK35 |
| EnviroTrans™ D/E Neutralizing Broth, | |
| 5ml, 20/bx | SRK45 |
| EnviroTrans™ Neutralizing Saline, | |
| 5ml, 20/bx | SRK55 |



*Consult our
Technical Support
Staff
800.266.2222
for help in product
selection specific to
your needs!*

Environmental Pathogen Screen

Rapid Screening for Environmental Salmonella or Listeria

PDX-LIB Listeria (AOAC-RI)

The easiest Listeria test available. This test is both reliable and inexpensive with presumptive results available for the most common Listeria spp. within 30 hours, no sub-culturing or specimen transfers required. The Test is AOAC-RI approved. ENVIROSMAX™ Sampling sponges are not included. PDX-LIB Media, 25/case..... 2500325 EnviroMax® Swab, 25/box.....2588050PF

PDX-SIB™ Media
Salmonella,
Cat. no. 2600325

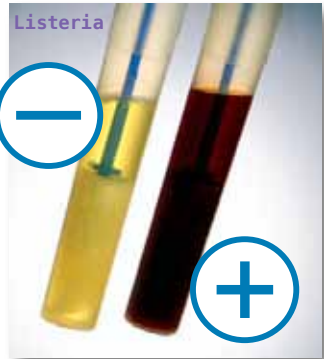
PDX-SIB Salmonella (AOAC-RI)

The easiest environmental Salmonella test available. This test is both reliable and inexpensive with presumptive results available for the most common Salmonella spp. within 24-48 hours, no sub-culturing or specimen transfers required. Simply collect your sample, inoculate the SDI-SIB media, and incubate. AOAC-RI approved. ENVIROMAX™ sampling sponge not included. PDX-SIB Media, 25/case..... 2600325 EnviroMax® Swab, 25/box.....2588050PF

PDX-SIB™ Media
Listeria,
Cat. no. 2600325



ENVIROMAX™ Swab



ATP-Hygiene Monitoring

SystemSure Plus™ Luminometer

Most cost-effective ATP hygiene monitoring system available

- Simple to use
- Self-calibration at startup
- Programmable Pass/Fail levels
- Stand alone system or download to PC
- Spreadsheet compatible data
- Lightweight
- Durable
- Battery operated
- Includes cable, operation manual, and durable carrying case

EachSS3

Free with Swab Lease Program!
Call 800-266-2222 ext. 5696 for details.

Best Value



1) Collect Sample



2) Snap to release built in Reagent



3) Insert into SystemSURE Plus™



4) Start Measurement (15 secs)



5) Record results



6) Download to computer if desired

UltraSnap™ ATP Swabs (ATP on Surfaces)

Use in conjunction with the SystemSure Plus™ Luminometer.

- All-in one testing device. Simple, quick, and easy-to-use
- Results in seconds
- Unique liquid-stable reagent for unprecedented accuracy and reproducibility
- 12-month shelf life at a refrigerated temperature of 2-8°C, 4-week shelf life at room temperature
- Measures total ATP present

100/box.....US2020

ATP-Hygiene Monitoring

Rapid E coli/Coliform Test

Micro-Snap™ Microbial Detection

Micro-Snap is a rapid test for detection and enumeration of specific bacteria. The test uses a novel bioluminescent test reaction that generates light when enzymes that are characteristic of specific bacteria react with specialized substrates to produce light. The light generating signal is then quantified in the sensitive. EnSURE handheld luminometer.

Results are available in 1 to 7 hours, depending upon required level of detection. Single figure organisms can be detected in 7 hours, enabling Micro-Snap to give results in the same working day or shift.

- Production surface monitoring
- Raw materials and finished product testing

- Quantifiable using the EnSURE Luminometer
- Solids, liquids, and filterable products
- Ready-to-use and Convenient
- Result in 7 hours or less
- Low levels of detection
- Pass/Fail result at required detection levels easy to understand
- Quantitative results (CFU counts)
- Qualitative results (presence/absence)
- Equivalent results to other culturing methods
- No specific sample preparation required
- Independently validated

| | |
|--|-----------|
| Coliform Test, 100/box..... | MSCC100 |
| <i>E.coli</i> Test, 100/box..... | MSEC100 |
| Coliform + <i>E.coli</i> Test, 100/box..... | MSESCE100 |



EnSURE Luminometer

EnSURE is a quality monitoring platform to collect, analyze and report data.

Key Functional Features:

- Multiple tests in one instrument
- Results in 15 seconds
- Sensitive - detects down to 0.1 femtomole of ATP
- 20 programmable test plans
- 250 programmable locations per test plan
- Location name identification on screen
- Programmable user identification
- Stores 2000 results
- SureTrend data analysis software

Key Design Features:

- Protected USB connection so no moisture can get into the system
 - Removable read chamber design allows for easy cleaning
 - Large viewable screen with backlight
 - Durable case
 - Sealed keypad is splash proof
- Monitoring system,
Each.....ENSURE



Rapid Non-ATP-Hygiene Checks

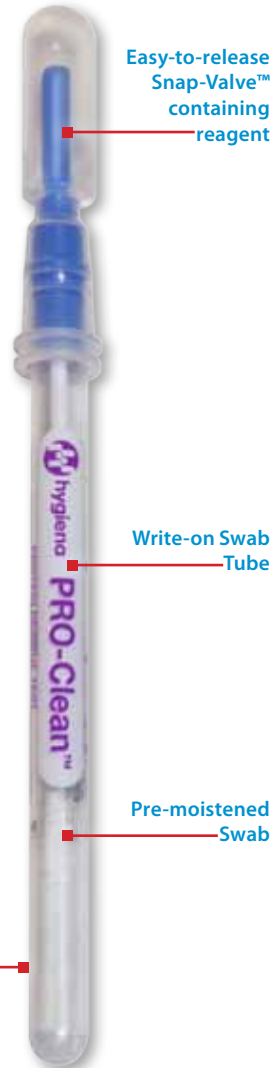
PRO-Clean™

(Detects Protein Residue)

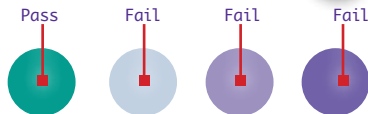
PRO-Clean™ is a quick and easy way to accurately monitor the cleanliness of surfaces to help ensure product quality. PRO-Clean™ detects protein residues left on a surface after cleaning. Simply swab the surface and release the reagent. If protein residue is present the reagent will turn purple. The color change provides a semi-quantitative measure of the surface cleanliness. The more contamination present, the quicker the color change to purple and the darker the color. PRO-Clean™ quickly validates the hygiene of a surface, allowing immediate corrective action to be taken if necessary.

- Results in under 10 minutes
- All-in-one device, no instrumentation
- 12 month shelf life
- Easy to interpret
- Affordable

100/box..... PRO100

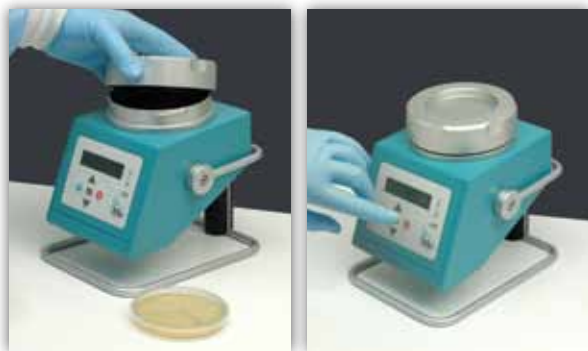


Color Change Reaction area



Color change reactions

Air Sampling



Spin Air Sampler

This innovative microbiological air sampler pulls air in a controlled fashion against the spinning agar plate.

- Bar code connectivity
 - A unique rotating plate holder for even surface spread of microorganisms for improved accuracy
 - Sampling by volume (not timed) for higher accuracy and reproducibility
 - Utilizes standard 60mm or 100mm agar plates
 - Rechargeable Ni-Metal Hydride 7.2V internal battery pack for up to eight hours of operation
 - Delayed activation mode to avoid collector contamination
 - Optional duplicate simultaneous sampling with a low cost slave unit
- Each.....5500



Culture Media for Air Sampling

DG-18 Agar

For the selective isolation and cultivation of xerophilic (dry loving) molds.
15x100mm plate,
10/pkW85

Malt Extract

For the cultivation and enumeration of yeasts and molds.
15x100mm plate,
10/pk W28

Potato Dextrose Agar (PDA)

For the cultivation of yeasts and molds.
15x100mm plate,
10/pkW60

Rose Bengal Agar

For the selective isolation and enumeration of fungi from environmental and food sources.
20x150mm glass tube,
100/pk..... Q81

SabDex (Sabouraud Dextrose) Agar

For the cultivation of yeast and molds.
15x100mm plate,
10/pkW70

TSA (Tryptic Soy Agar)

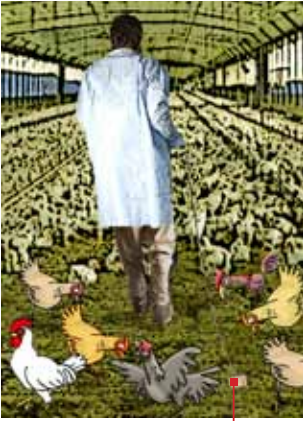
For the general cultivation of microorganisms.
15x100mm plate,
10/pkG601
15x150mm plate, USP,
10/pkH19



Escherichia coli
(ATCC® 8739)
colonies growing
on TSA



Environmental Sampling- Drag Gauze

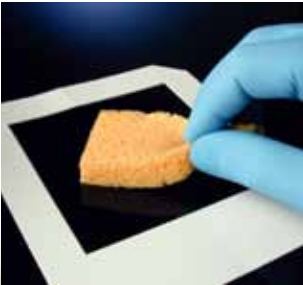


Poultry Drag Gauze

Poultry Drag Gauze

Sterile sampling devices used to sample poultry litter for pathogenic organisms, e.g. Salmonella. Each pocket-size kit contains a 30ml-polystyrene vial which encloses a sterile 4-ply 3" x 3" cotton gauze swab (pre-moistened with double strength skim milk) attached to a cord about six feet in length. Also included is a pair of plastic gloves, a label, and a sterile plastic 510ml twirl-style transport bag.

100/box.....DS001



Sampling Templates

Sampling Templates

A disposable, stiff sampling template that is packaged in a plastic bag and sterilized by irradiation. Used for meat carcass testing and other surface enumeration procedures.

10x10cm (plastic), 50/pk.....T2905C



Environmental Sampling Sponges

EnviroMax Plus® Environmental Sampling Swabs, Sterile

Pointed pre-moistened foam tip, 50% neutralizing buffer & 50% 0.1% peptone water, polypropylene handle.

25/box.....2588050PF
250/box.....2588050PFB

Sampling Sponge, Pre-moistened with Buffered Peptone Water

Sterile cellulose sponge pre-moistened with 10ml of Buffered Peptone Water. Individually wrapped in foil pouch.

100/box..... BS10BPW1

Sampling Kit, Pre-moistened with Buffered Peptone Water and Gloves

Pre-moistened sterile cellulose sponge with 10ml of buffered peptone water, individually wrapped in a foil pouch. A pair of sterile sampling gloves, 510ml Twirl 'Em® bag, and one sample identification label are included.

With Buffered Peptone Water and Gloves,
50/box..... BS02BPW1

EnviroMax® Plus Environmental



Sampling Kit, Pre-moistened with Butterfield's Phosphate Buffer and Gloves

Pre-moistened sterile cellulose sponge with 10ml of Butterfield's Phosphate Buffer, individually wrapped in a foil pouch. A pair of sterile sampling gloves, 510ml Twirl 'Em® bag and one sample identification label are included.

50/box.....BS02BPB1

Sample Sponge, Pre-moistened with Butterfield's Phosphate Buffer

Sterile cellulose sponge pre-moistened with 10ml of Butterfield's Phosphate Buffer. Individually wrapped in foil pouch.

100/box..... BS10BPB1

Sampling Sponge, Pre-moistened with Neutralizing Buffer

Sterile cellulose sponge pre-moistened with 10ml of Neutralizing Buffer, individually wrapped in foil pouch.

100/box..... BS10NB1

Sampling Kit, Pre-moistened with Neutralizing Buffer

Pre-moistened sterile cellulose sponge with 10ml of Neutralizing Buffer, individually wrapped in a foil pouch. A pair of sterile sampling gloves, 510ml Twirl 'Em Bag®, and one sample identification label are included.

50/box..... BS02NB1



Sponge-Stick, with Neutralizing Buffer

Sponge-Stick, with Neutralizing Buffer

Solar-Cult® sterile cellulose sponge is pre-moistened with Neutralizing Buffer, attached to a quick release handle, and packaged in a sterile bag to make this an all-inclusive sampling system. Remove the handle with attached sponge, collect the sample, release the sponge into the bag, twirl-it closed, and send it to the lab for analysis.

100/box.....SH10NB1

Dry Speci-Sponge® in a (.5 kg) Whirl-Pak® Bag

Designed for environmental surface sampling of work areas, equipment, animal carcasses, and any other place where testing for *Listeria*, *Salmonella* and *E. coli* and other food-borne pathogens is required. The special 4x8cm sponge is free of bactericides and has been tested to be non-inhibitory. For Hydration Fluids, see Prepared Media section of this catalog.

100/box.....B01245WA

With sterile gloves,
100/box.....B01392WA

Whirl-Pak®, Wet Speci-Sponge® Kit with Neutralizing Buffer

This pre-moistened Speci-Sponge® Kit makes environmental surface sampling fast and easy. Perfect for sampling work areas, equipment, animal carcasses, and any other place where *Listeria*, *Salmonella*, and *E. coli* may be found. The sponge comes in a sterile bag and is pre-moistened with 10ml of Neutralizing Buffer. The kit has a shelf life of one year and requires no refrigeration. With sterile gloves
100/box,.....B01423WA



Pre-moistened Sample Sponge

EnviroBootie™

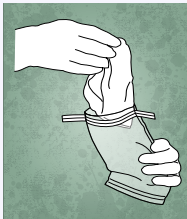
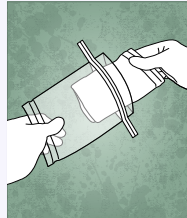
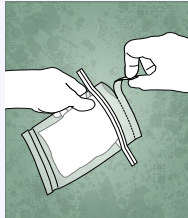
**TOP
SELLER**

EnviroBootie™ is a collection system for the monitoring of Salmonella contamination in flock floor litter and other surfaces. This "one size fits all" gauze shoe cover is ready-to-use and pre-moistened with skim milk. Simply remove the EnviroBootie™ from the sample bag, place the boot swab over a plastic boot cover (Cat. no. C14019WA), then walk through the poultry barn. This unique design allows for highly efficient sample collection, secure transport, pre-enrichment incubation, and disposal, all in the same container! EnviroBootie™ can also be used as a sampling mitt for belts, feeders, and other recommended sampling surfaces.

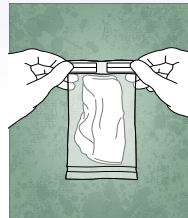
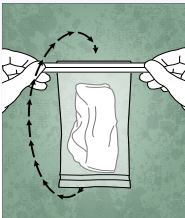
- 2 Pre-moistened (2X skim milk) bootie per bag, 50 bags/pk.....EB50
- 1 Pre-moistened (2X skim milk) bootie per bag, 100 bags/pk.....EB100



- One size fits all
- Pre-moistened bootie



EnviroBootie™

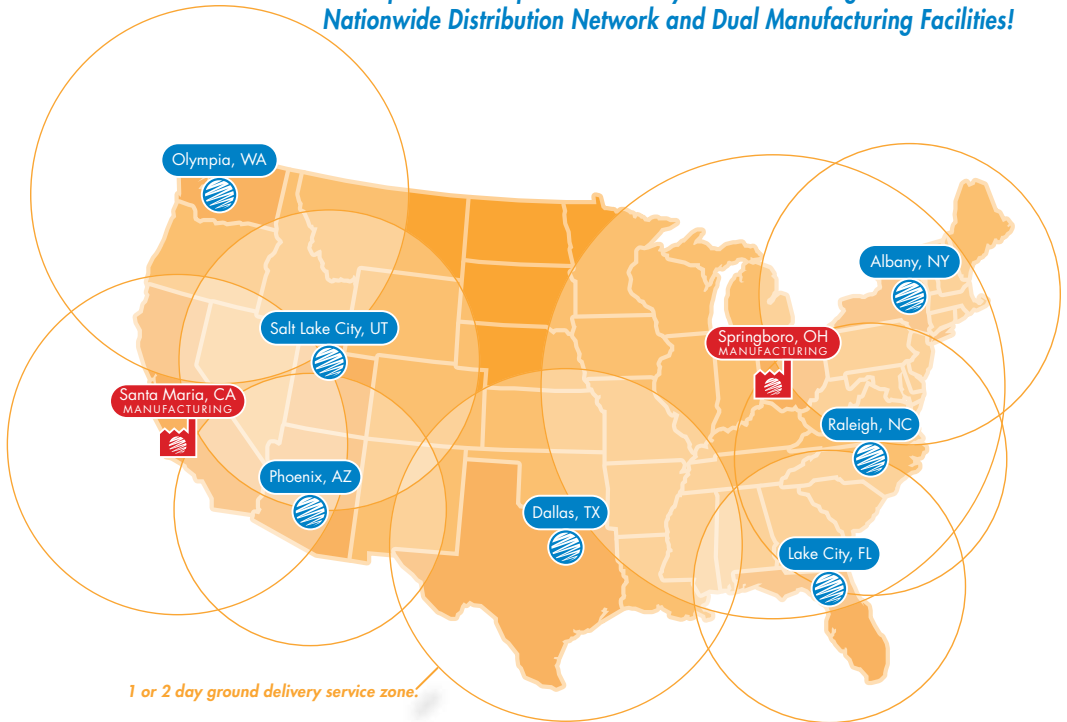


Now with 9 Distribution Centers 2 Manufacturing Plants to serve you better!

Over 13,000 laboratory supply products are stocked and ready for immediate shipment. Utilize our online ordering at www.HardyDiagnostics.com.

- Fresh media - longer shelf life
- Rapid one or two day ground delivery

For Rapid and Inexpensive Delivery - Take Advantage of our Nationwide Distribution Network and Dual Manufacturing Facilities!



Same Day Shipping

Orders placed before 1:30 p.m. for all time zones (except Hawaii and Alaska) are processed and shipped out the same day. Most orders are received the next morning.



A Culture of Service™

1430 West McCoy Lane

Santa Maria, CA 93455

www.HardyDiagnostics.com | Sales@HardyDiagnostics.com

Distribution Centers: California | Washington | Utah | Arizona
Ohio | Texas | New York | Florida | North Carolina